

GENERAL  
CATALOGUE

July 2021

AVEX  
CERAMICS

One Smile Begin a Friendship :)

لبخند شروع یک دوستی

## About us

Avex started production in 2018 with the support of 25 years of experience in the ceramic tile industry and is collaboration with a team of architects & engineers.

Avex Ceramics started with a knowledge - based approach to brand infrastructure development, so Avex creators were able to take a major step-forward in innovating and producing world-class quality Iranian products but the whole value of Avex is not just about producing quality, having a precious place in the audience's mind puts a targeted relationship with the promotion of new sales promotion ads.

By studying audience behavior and understanding the philosophy of lifestyle; Avex began to taste for specific people.

Avex mission is to create a magnificent advantage for the construction site.



AVEX  
CERAMICS

# Content

	Matt Glaze 60×120 cm	
SURFACE .....		10
HABLUT.....		20
KAURI.....		26
FABRICA.....		32
	Polished 60×120 cm	
ICON.....		40
LIMBA.....		48
WOOD LIFE .....		52
ZEST .....		56
	33×100 cm	
STRIP.....		60
DALIA .....		66
VERSO.....		74
HABLUT.....		82
MARMARIS / LUGAN .....		92
VISTA .....		102
GEORGIO.....		108
SCALA.....		116
VITRO .....		126
LIMBA.....		130
ISLAND.....		134
	90×90 cm	
DALIA .....		140
HABLUT.....		146
SCALA.....		152
STRIP .....		166
VERSO.....		174
	100×100 cm	
RACHINA.....		186
LIMBA.....		190
ORCHARD.....		194
	MOSAIC GLASS	
ST30 .....		200
ST31 .....		202
ST35 .....		204
ST36 .....		204
ST21 .....		208
ST26 .....		210
ST24 .....		212
ST22 .....		214





**SURFACE**  
COLLECTION

---





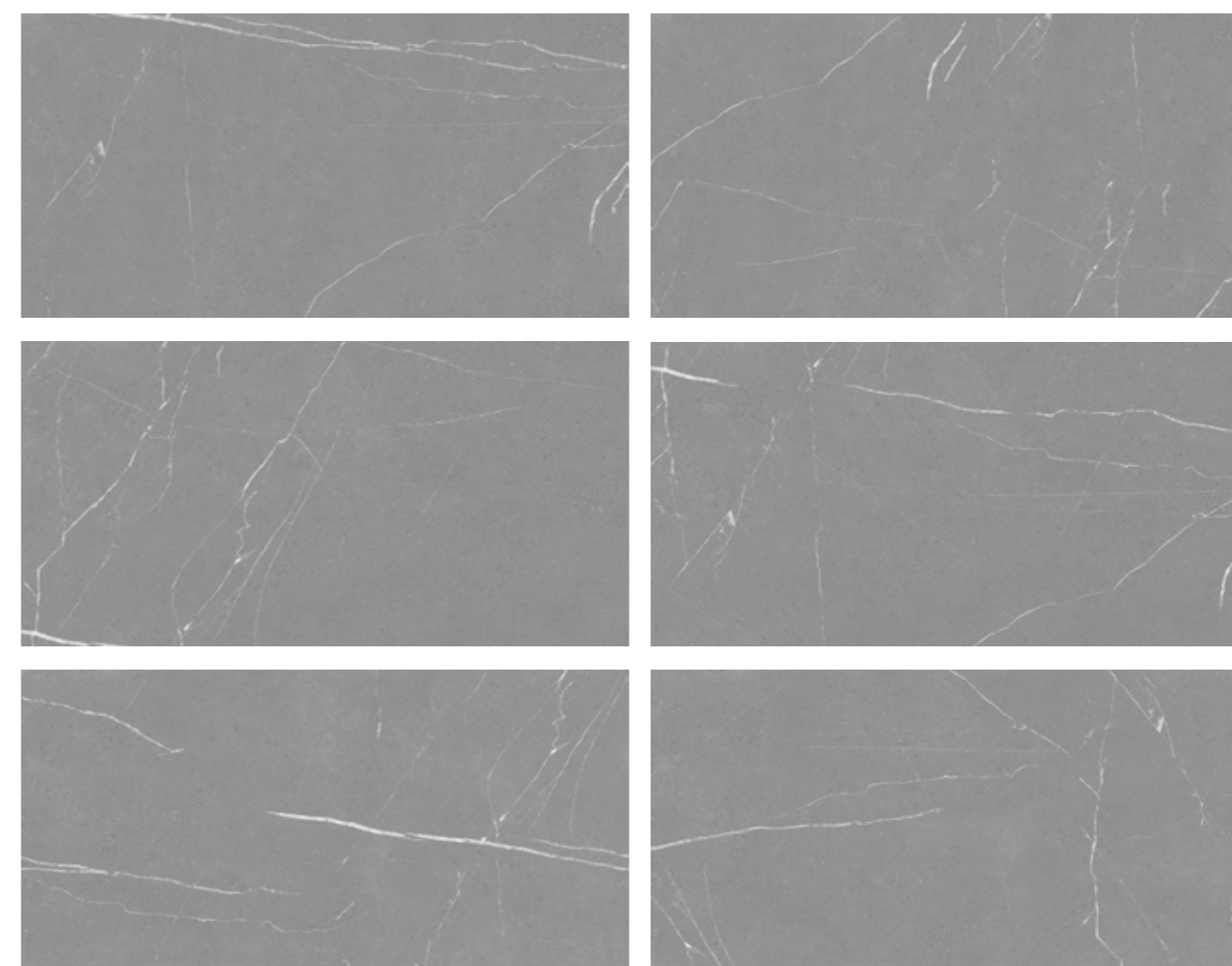


# SURFACE

60×120 cm



Porcelain  
**Rustic**  
White Body  
**Matt Glaze**  
Different Face: 6  
**Rectified**  
Color: Dark Gray

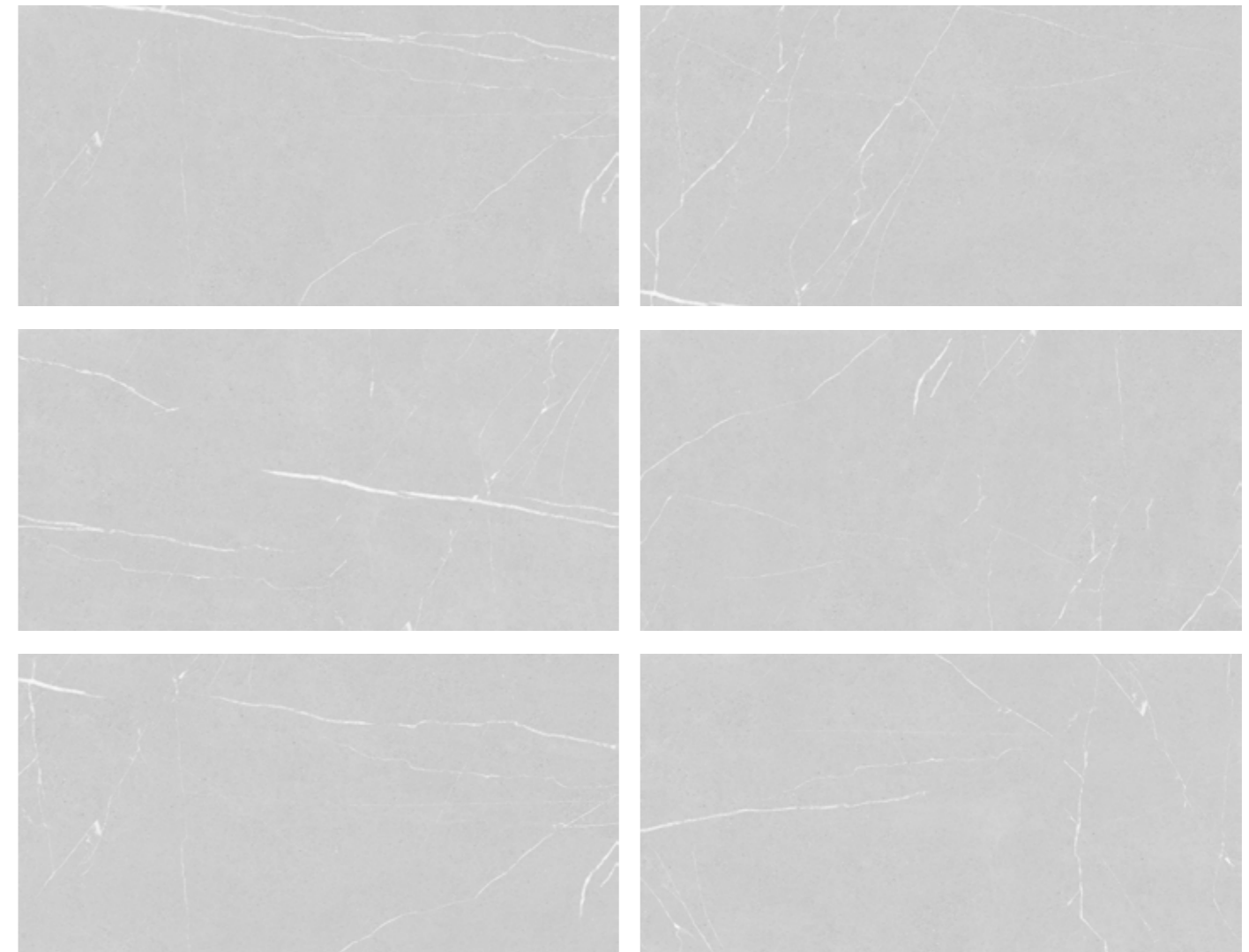
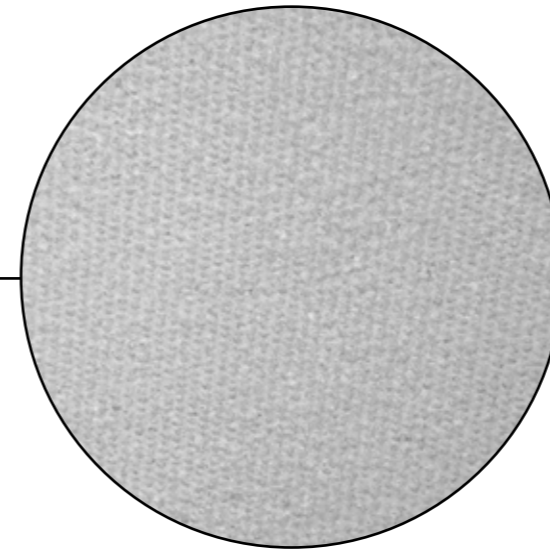


SURFACE \ Dark Gray





**S**urface celebrates one of Europe's finest stone materials, calacatta. avex has reinterpreted its inspiring material while retaining its geological history with harmonious colour variations and a bright micro-grain. The magnificent 90x90 cm sizes form an integral part of a research path that relates form with content. The large modules support the textured movements, the soft colour variations contributing to the continuity and harmony of the entire space.



SURFACE \ Light Gray



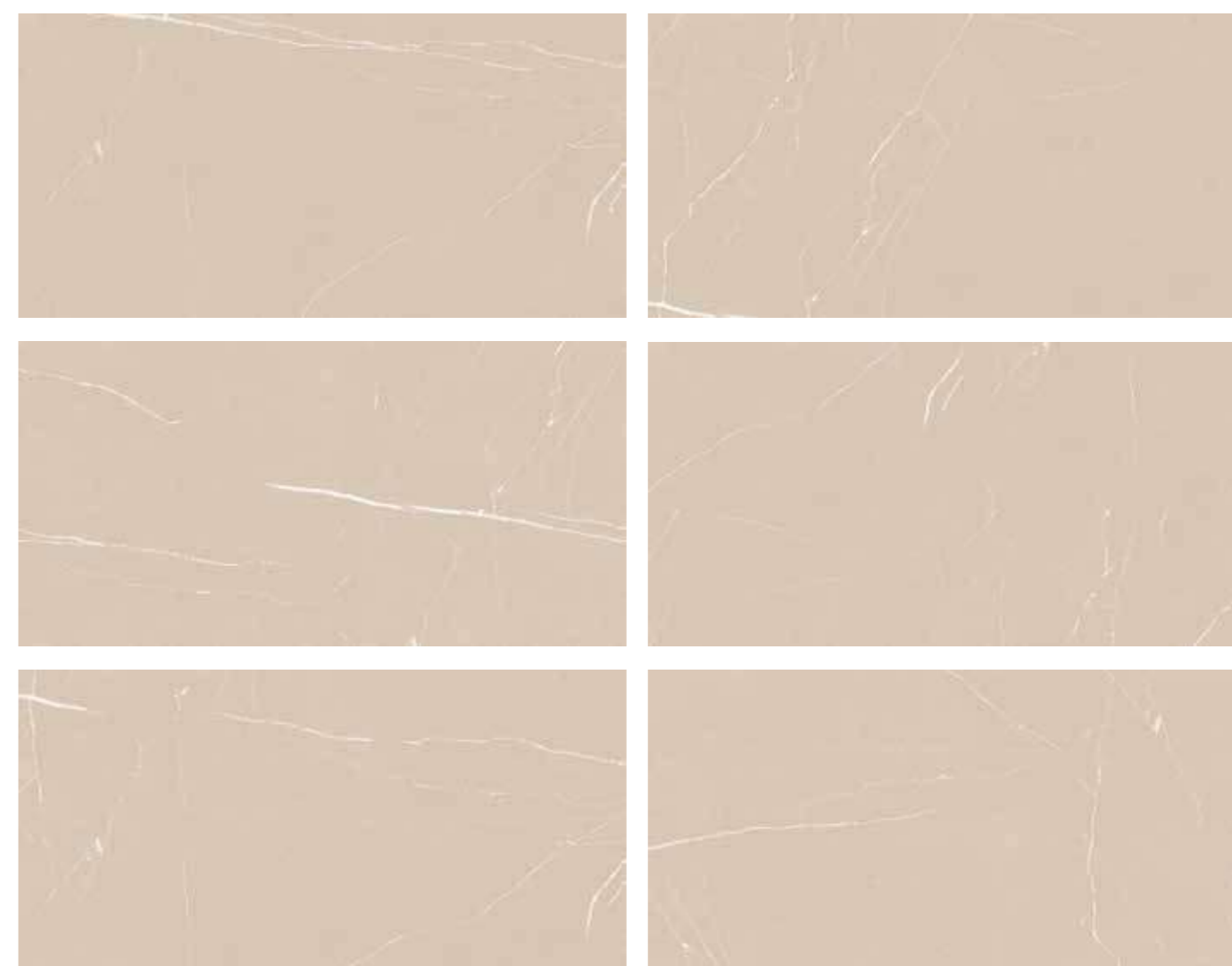


# SURFACE

60×120 cm

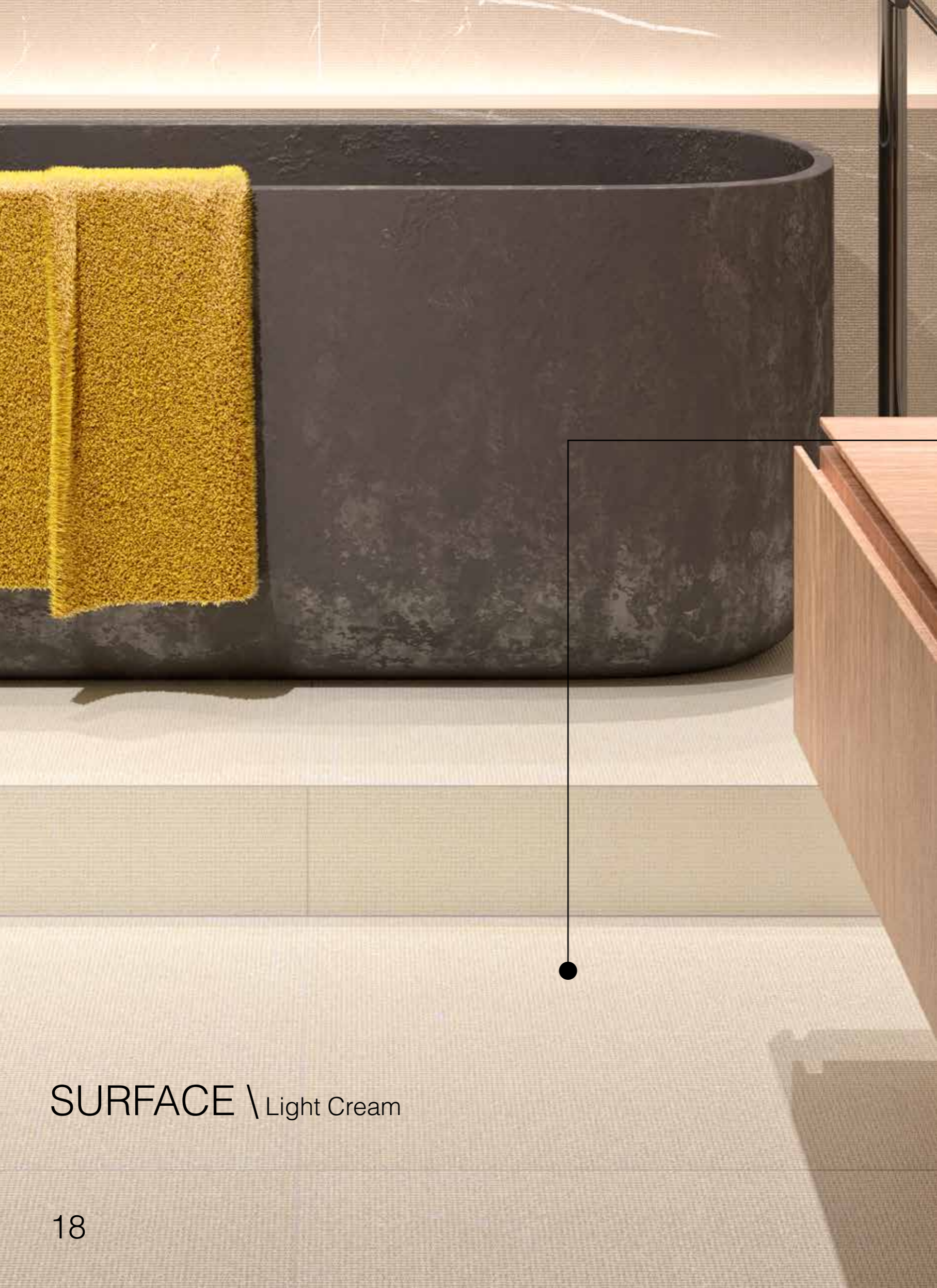


Porcelain  
**Rustic**  
White Body  
**Matt Glaze**  
Different Face: 6  
**Rectified**  
Color: Dark Cream



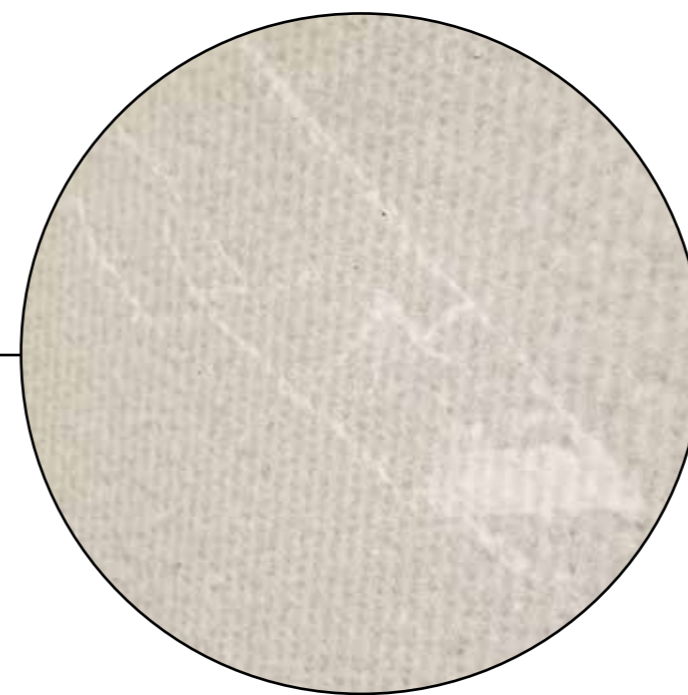
SURFACE \ Dark Cream





# SURFACE

60x120 cm



SURFACE \ Light Cream



**HABLUT**  
COLLECTION

---







# HABLUT

Essential Hablut styling meets with the complementary matt finish. avex porcelain stoneware brings to mind age-worn surfaces; the regular edges and balanced reflectance highlight the meticulous attention to design, catering to the needs of a space where brightness and naturalness play a starring role.

The large 90x90 cm modules cover walls and floors for a complete camouflage effect between material and space.

Delicately faded tones and seemingly random decorative patchwork designs adorn the Hablut bases to form poetic ceramic carpets.

The Hablut graphic signs evoke the traditional paste tiles of late 21th century concrete, an aesthetic that has created a real trend of interior decoration. The tone on tone graphic markings recall traditional 21th century stone paste tiles, an aesthetic that has given way to a real interior decoration trend.





# HABLUT

60×120 cm



## Porcelain

White Body

## Matt Glaze

Different Face: 6

## Rectified

Color: Light Gray



HABLUT



**KAURI**  
COLLECTION

---





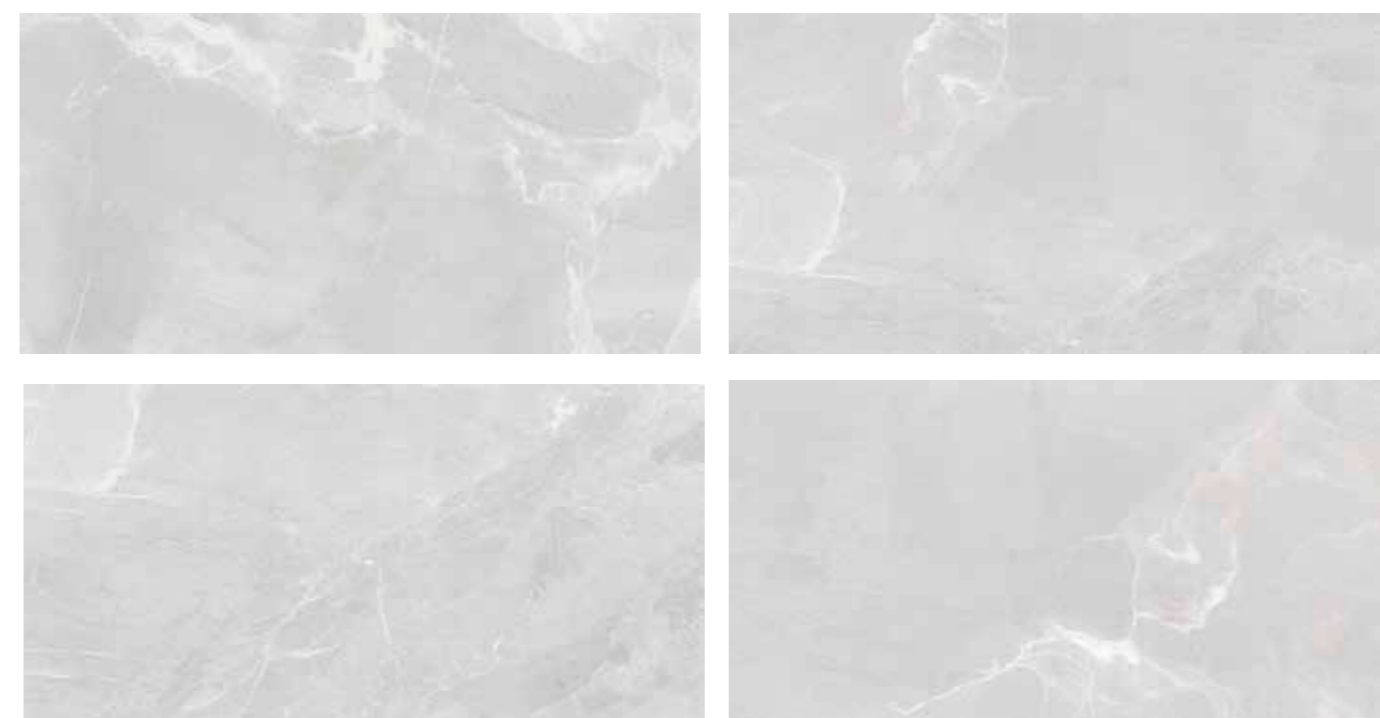


# KAURI

60×120 cm



**Porcelain**  
White Body  
**Matt Glaze**  
Different Face: 4  
**Rectified**  
Color: Light Gray



Kauri \ Light Gray



# KAURI

60×120 cm



## Porcelain

White Body

## Matt Glaze

Different Face: 4

## Rectified

Color: Dark Gray



Kauri \ Dark Gray



**FABRICA**  
COLLECTION





**FABRICA**

60×120 cm

Fabrica \ Dark Gray





FABRICA \ Rustic Decor Dark Gray

Porcelain stoneware has become a favorite material for housing projects and the contract sector. Due to its solid composition and appearance, this material can be incorporated into spaces with high levels of traffic or exposure (ventilated and glued facades).

Due to its ability to withstand high temperatures, impacts, and blows, as well as its anti-slip properties, Avex Group has continued to develop research into new formulas and formats for porcelain stoneware. The collections of this product are inspired by fine materials such as wood, marble, and granite.

Group porcelain stoneware is adaptable to the needs of each project. Durable, restrained, bright, and balanced, this material is the perfect solution for large areas or projects such as shopping centers, work centers, or public buildings. The elegance, brilliance, consistency, and low maintenance of this material make it increasingly used for terraces and facades. This is also the case with non-slip tiles that withstand regular use and remain intact over time.







# FABRICA

60×120 cm



## Porcelain

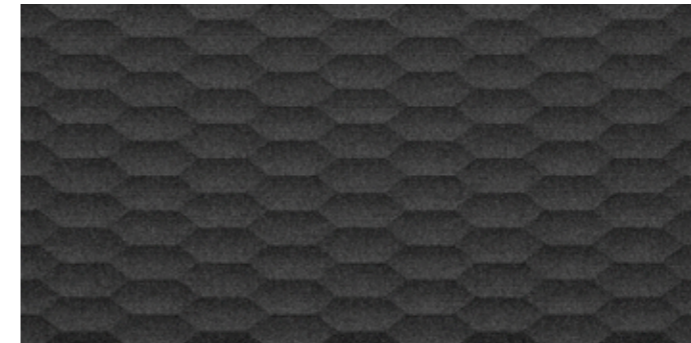
White Body

## Matt Glaze

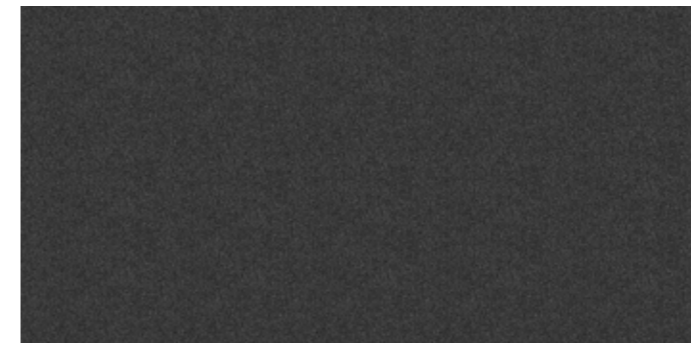
Rustic

## Rectified

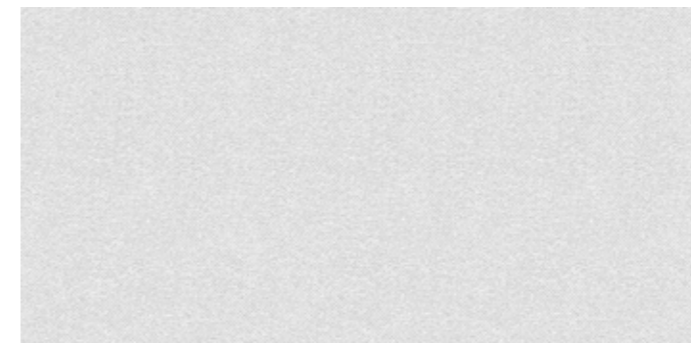
Color: Light Gray | Dark Gray



Fabrica Rustic Decor | Dark Gray




Fabrica Rustic | Dark Gray



Fabrica Rustic | Light Gray

FABRICA \ Light Gray





“The darkness around us might somewhat light up if we would first practice using the light we have in the place we are.” – Henry S. Haskins

Black gemstones are mysterious and intriguing. They are documented in history and continue to play an important part of modern society due to their symbolism and perceived properties.

The colour black is often associated with knowledge, fertility, purity of spirit, protection, cleansing and detoxing, and life and death. So, how has this dark hue moved from a symbol of doom and death to be a thing of beauty and mystery?

Icon collection is a different creativity and visual effect in stones. Color contrast based on natural attractions has caused harmony in the effect.

# ICON

## COLLECTION

Avex Ceramics

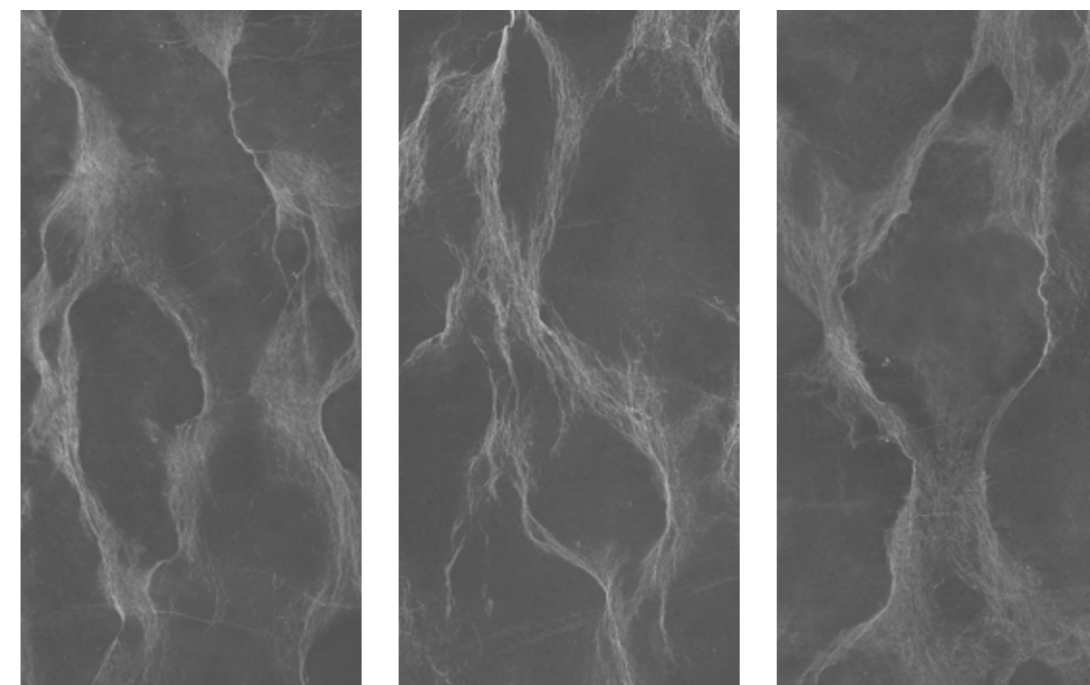




**Porcelain**  
White Body  
**Polished**  
Different Face: 3  
**Flat**  
Rectified  
**Color: Gray**

# ICON

60x120 cm



ICON \ Gray





ICON \ White

**Porcelain**  
White Body  
**Polished**  
Different Face: 3  
**Flat**  
Rectified  
**Color: White**

# ICON

60x120 cm





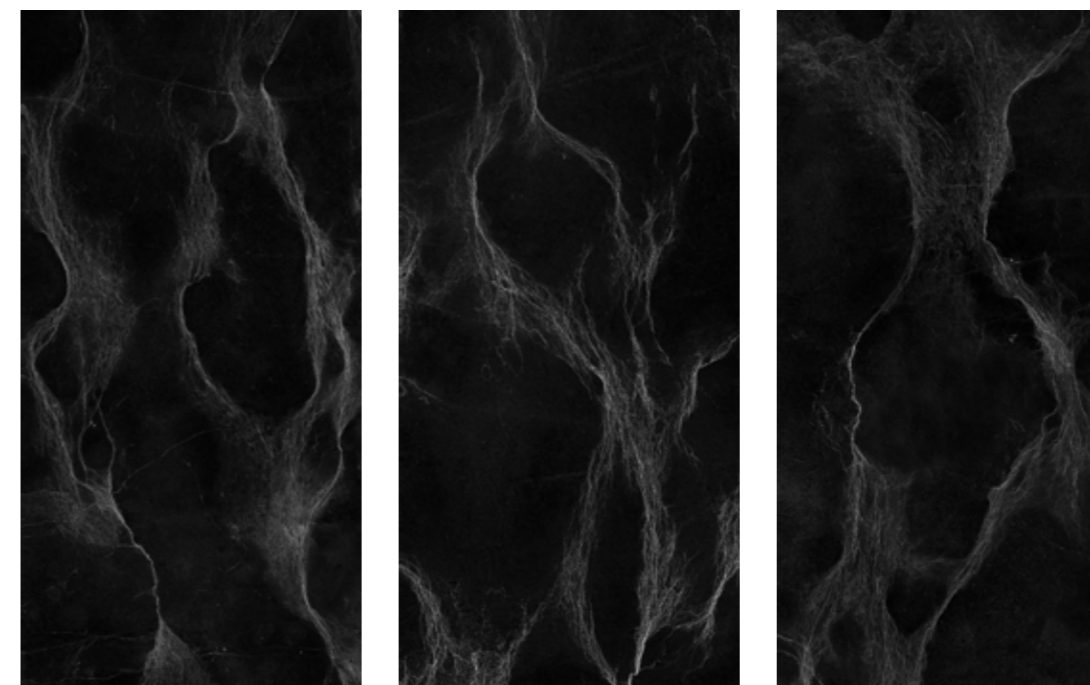


ICON \ Black

**Porcelain**  
White Body  
**Polished**  
Different Face: 3  
**Flat**  
Rectified  
**Color: Black**

# ICON

60x120 cm







LIMBA \ Light





LIMBA \ Light

50

**Porcelain**  
White Body  
**Polished**  
Different Face: 4  
**Flat**  
Rectified  
**Color: Light**

# LIMBA

60x120 cm







WOOD LIFE \ Light





# WOOD LIFE

60x120 cm



**Porcelain**  
White Body  
**Polished**  
Different Face: 3  
**Flat**  
Rectified  
**Color: Light**

WOOD LIFE \ Light



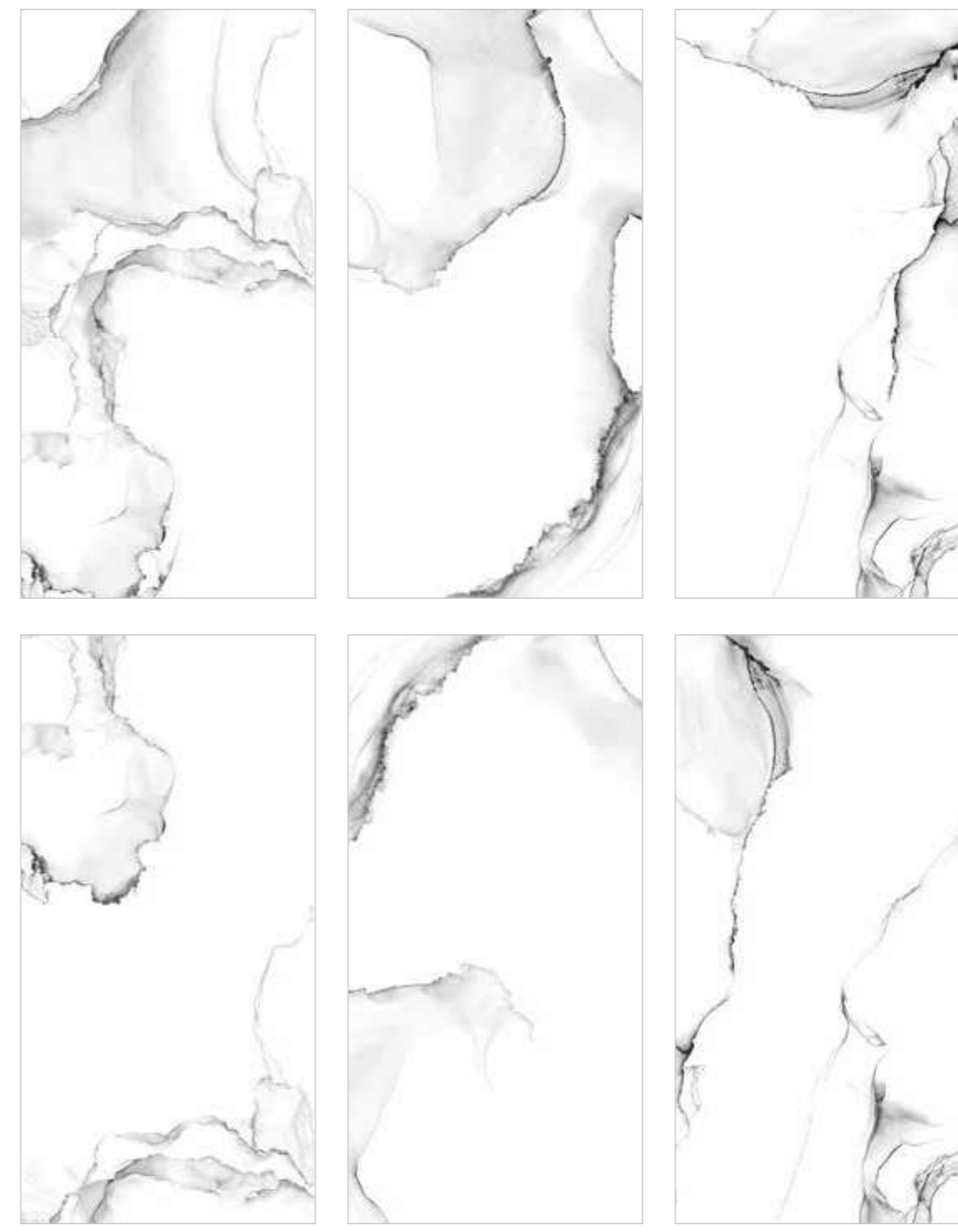




**Porcelain**  
White Body  
**Polished**  
Different Face: 4  
**Flat**  
Rectified  
**Color: White**

# Zest

60x120 cm



ZEST \ White







STRIP  
COLLECTION

AVEX  
CERAMICS





**327×981 mm**

**Wall Tile**

Color: Light Gray

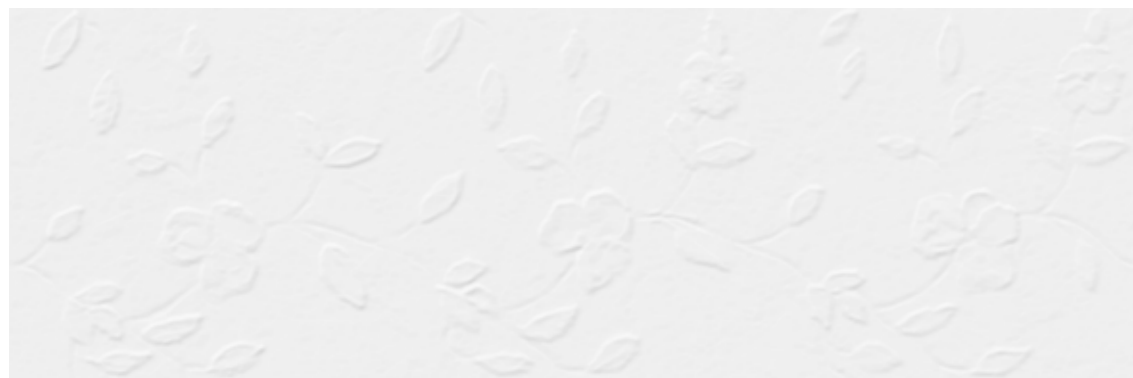
**Punch: Rustic**

White Body

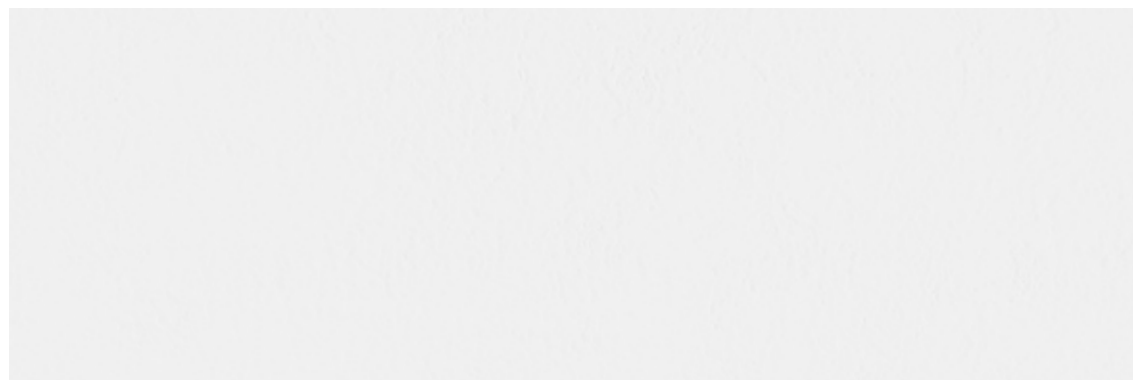
**Matt Glaze**

Different Color: 2

**Rectified**



Strip / Rustic Decor / Light Gray



Strip / Rustic / Light Gray

**STRIP**  
Wall Tile





# 327x981 mm

## Wall Tile

Color: Light Gray

**Punch: Rustic**

White Body

**Matt Glaze**

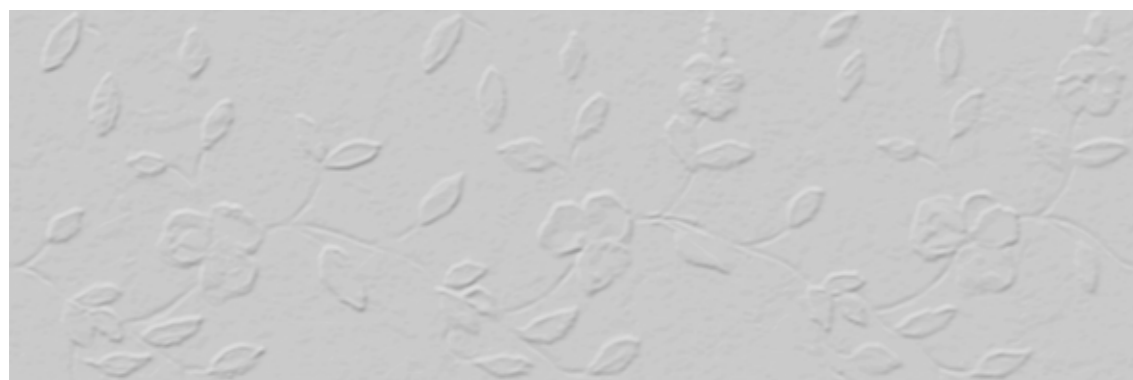
Different Color: 2

**Rectified**

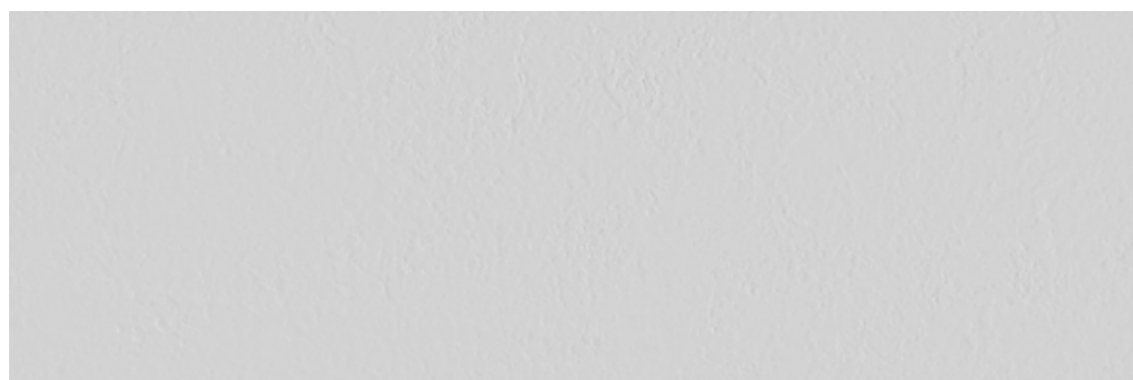


# STRIP

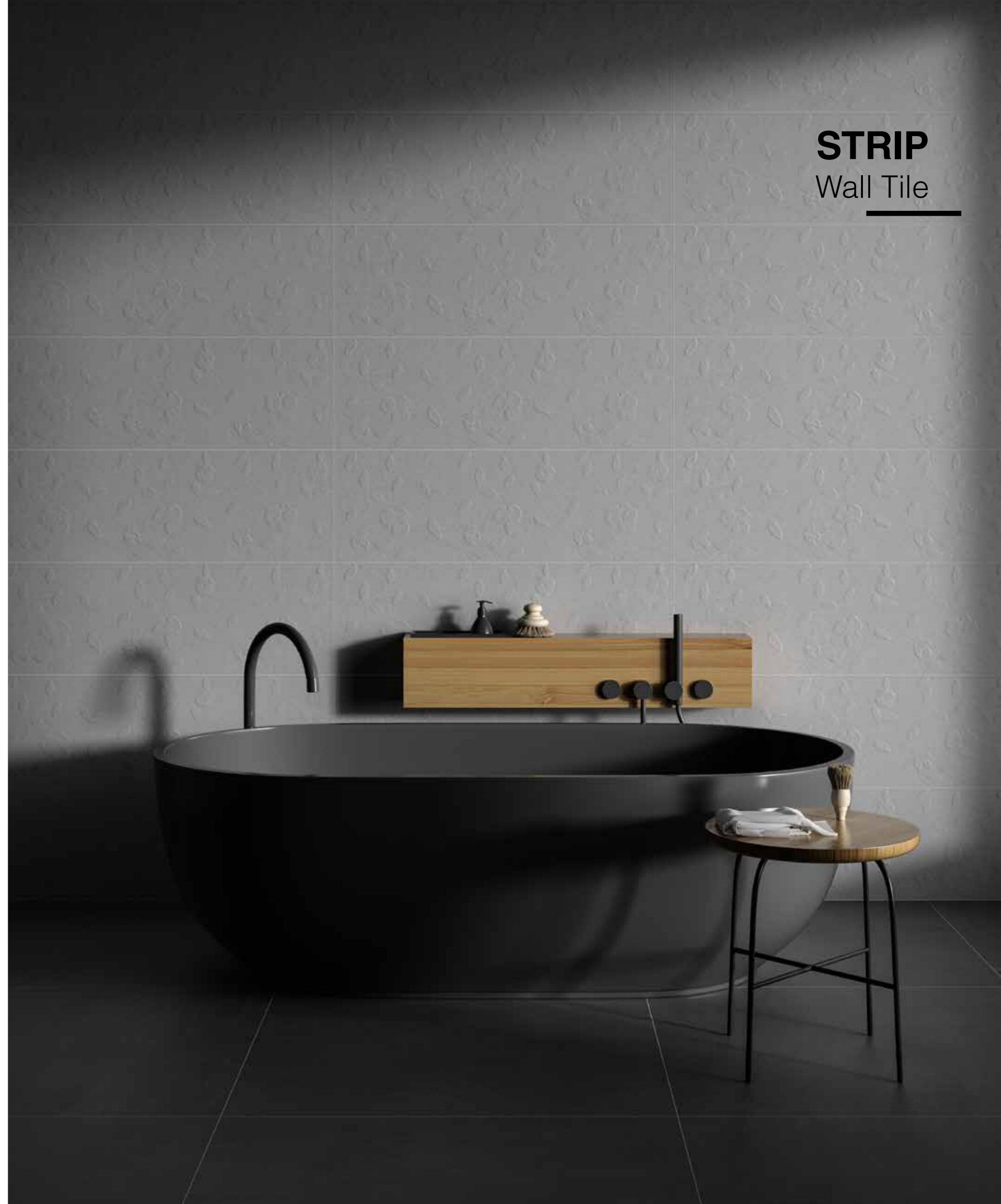
## Wall Tile



Strip / Rustic Decor / Dark Gray



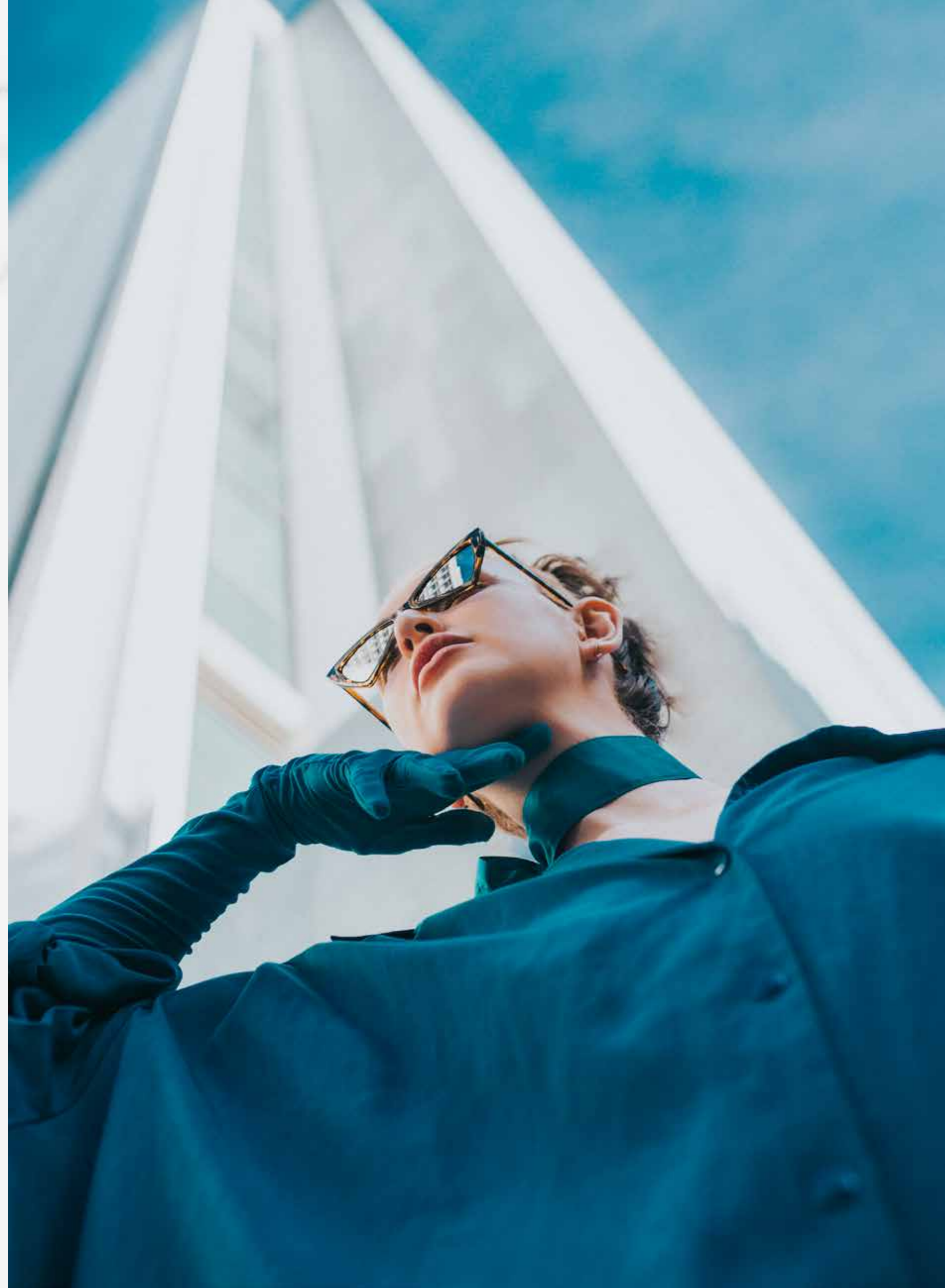
Strip / Rustic / Dark Gray





**DALIA**  
COLLECTION

---







**DALIA**

Wall Tile







# 327x981 mm

## Wall Tile

Color: Light Gray

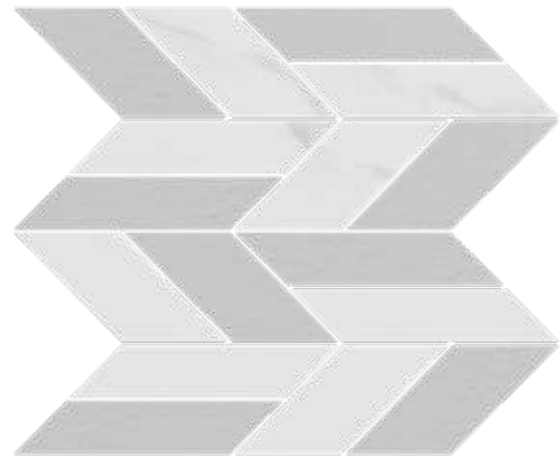
**Punch: Rustic**

White Body

**Matt Glaze**

Different Color: 2

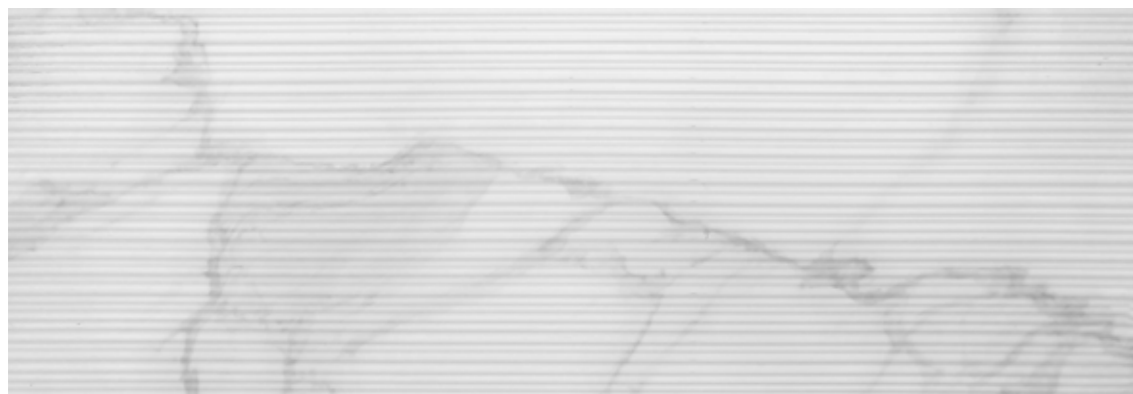
**Rectified**



Dalia / Mosaic / 340x320 mm



Dalia / Flat / White



Dalia / Rustic Line / White

# DALIA

Wall Tile





**VERSO**  
Collection

---







# VERSO

Wall Tile

Color: Dark & Light Gray  
**Punch: Rustic**  
White Body  
**Matt Glaze**  
Rectified



Verso / Brick (rustic A) / Light Gray



Verso / Stone (rustic B) / Light Gray



Verso / Flat / Light Gray



ELEVATE STYLE with  
**AVEX**  
DESIGNS





# VERSO

## Wall Tile

---

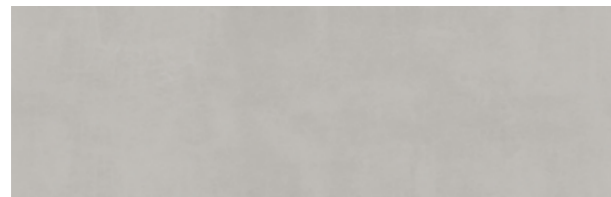
A long tradition in the production of tiles is renewed through the research and experimentation of new styles for contemporary living



Verso / Brick (rustic A) / Dark Gray



Verso / Stone (rustic B) / Dark Gray



Verso / Flat / Dark Gray





# HABLUT

Collection

---





# HABLUT

Wall Tile







# HABLUT

Wall Tile

Color: Beige  
**Punch: Rustic**  
White Body  
**Matt Glaze**  
Effect: Mica Hard Surface  
**Rectified**  
Different Face: 9



Hablut / Rustic / Beige



Hablut / Flat / Beige



**Mosaic  
Tile**



**Mosaic Decoration**  
265x380 mm

**HABLUT**  
Color: BEIGE





Elevate Style with  
**AVEX** ם  
DESIGN



# MARMARIS / LUGAN

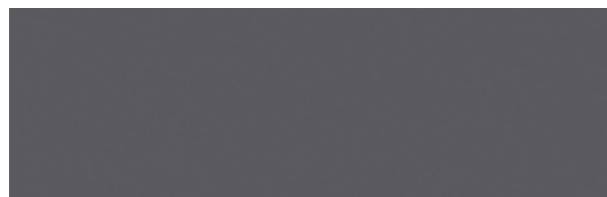
Wall Tile



LUGAN / Rustic / Dark Gray



MARMARIS / Rustic / Dark Gray



MARMARIS-LUGAN / Flat / Dark Gray

**327×981 mm**

Color: White & Gray

**Punch: Rustic**

White Body

**Matt Glaze**

Effect: Trans

**Different Face: 2**

Rectified







## MARMARIS / LUGAN Wall Tile

**327x981 mm**

Color: White & Gray

**Punch: Rustic**

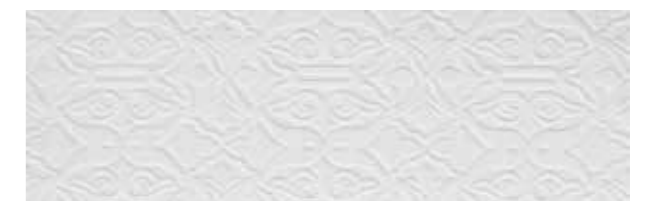
White Body

**Matt Glaze**

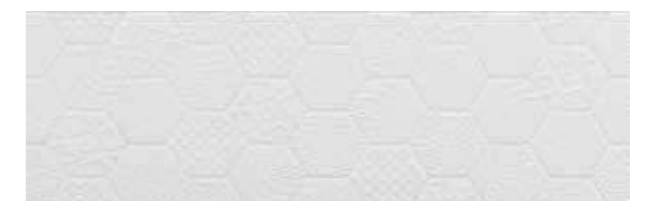
Effect: Trans

**Different Face: 2**

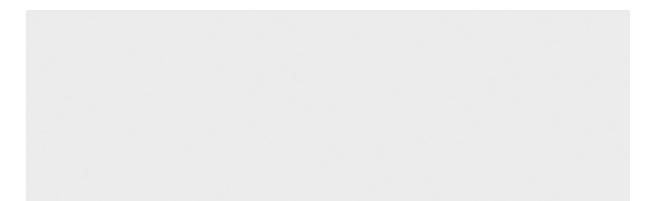
Rectified



LUGAN / Rustic / White

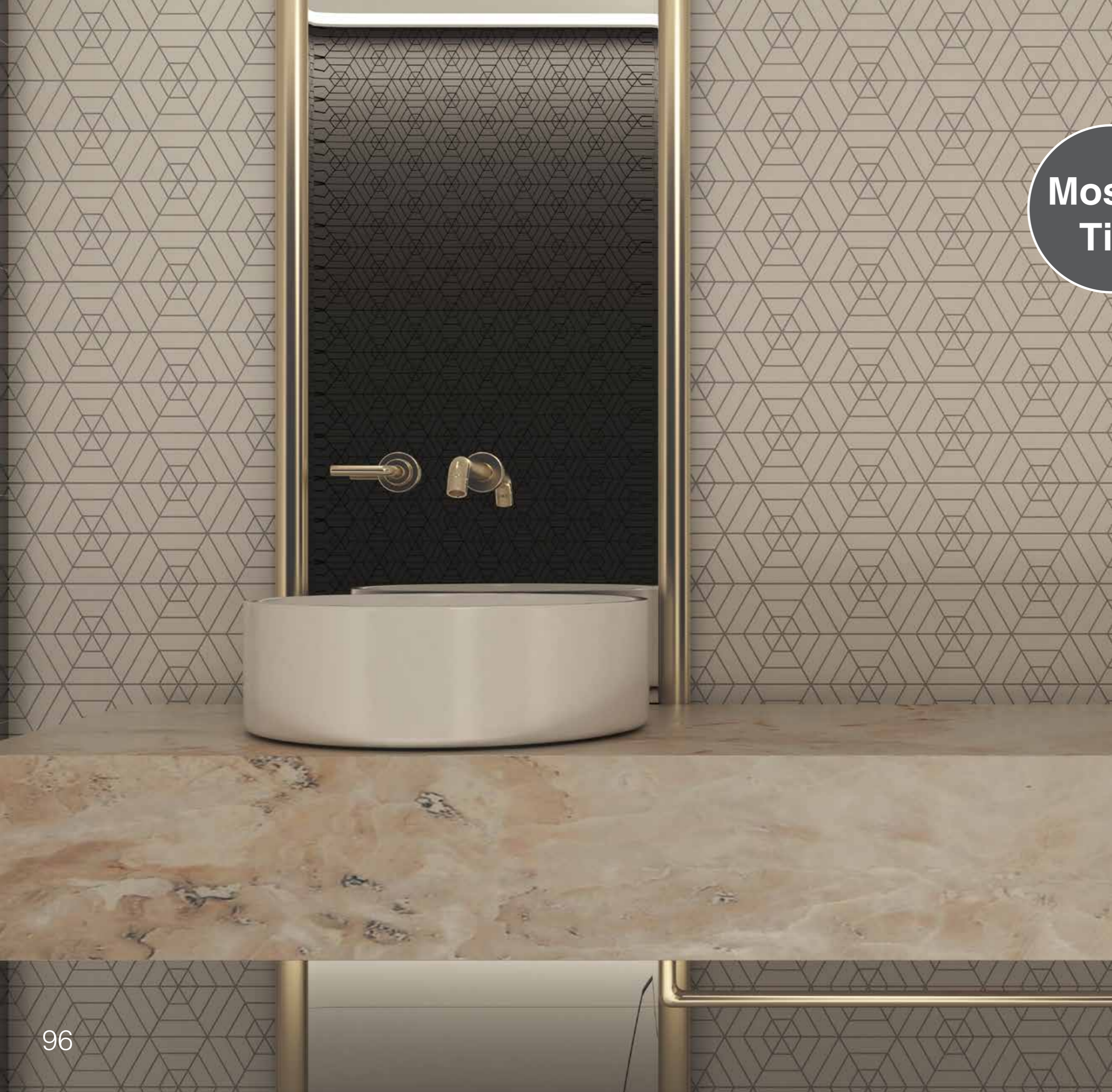


MARMARIS / Rustic / White



MARMARIS-LUGAN / Flat / White





**Mosaic  
Tile**



**Mosaic Decoration**  
265x380 MM

**MARMARIS / LUGAN**  
Color: White & Dark Gray



**Mosaic  
Tile**

**MARMARIS / LUGAN**  
Wall Tile

Avex offers you ceramic and porcelain stoneware wall and floor tiles to give your bathroom even more appeal.





“A long tradition in the production of tiles is renewed through the research and experimentation of new styles for contemporary living

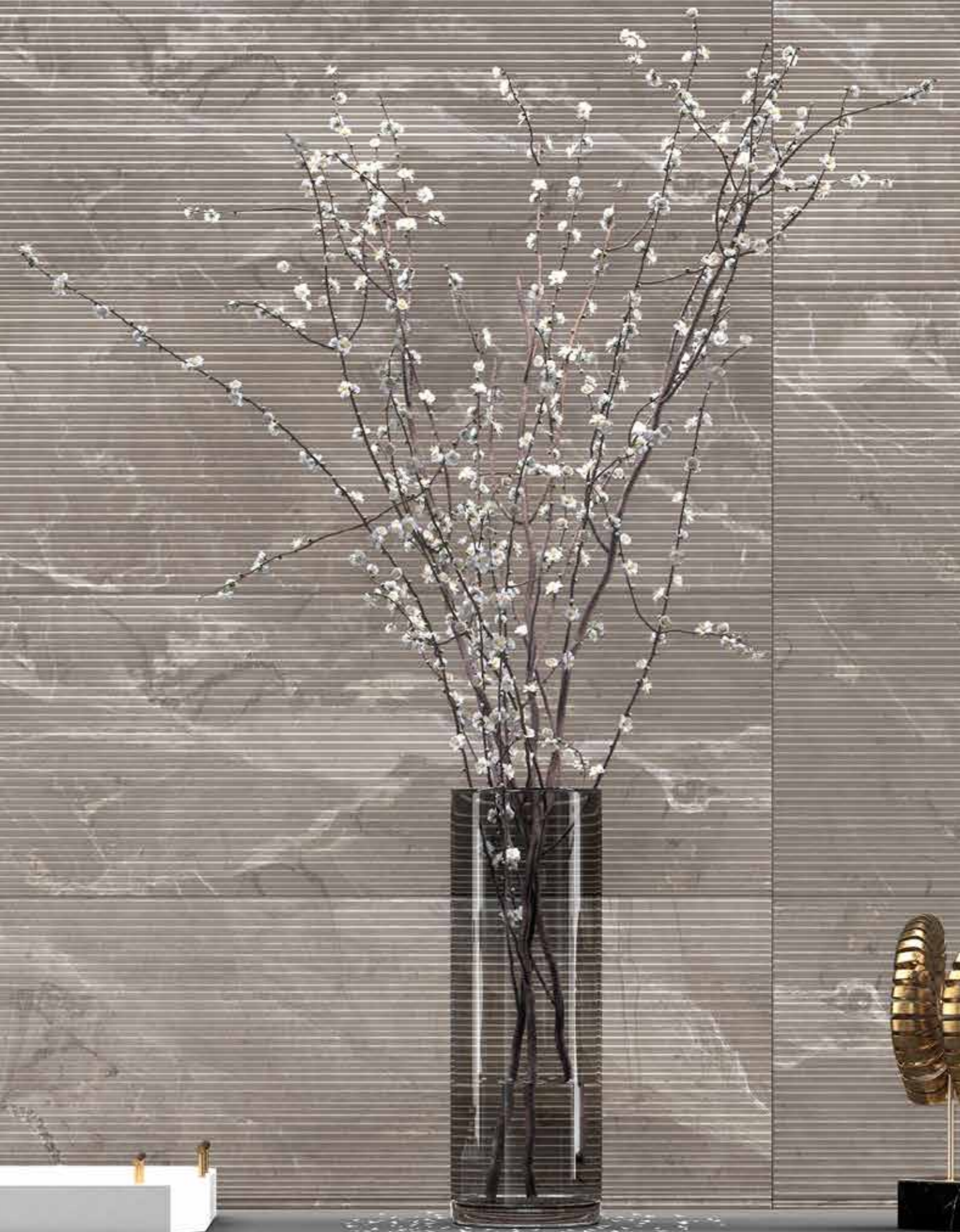
ELEVATE  
STYLE with  
AVEX  
DESIGNS



# VISTA

Wall Tile

**Modern, romantic and chic:  
lots of delicate nuances for  
styles that are different but  
always bon ton**





**VISTA**  
Wall Tile

---







**Vista**  
**327x981 mm**

**MATT SERIES**  
Color: Light & Dark Cappuccino  
Effect: Matt Glaze  
Face: 4



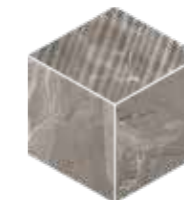
Dolomit / Rustic / Light Cappuccino / 195x220 mm



Vista / Rustic / Light Cappuccino



Vista / Flat / Light Cappuccino



Dolomit / Rustic / Dark Cappuccino / 195x220 mm



Vista / Rustic / Dark Cappuccino



Vista / Flat / Dark Cappuccino









”

our diligent pursuance of  
achieving the impossible  
is what separates us from  
the rest

**GEORGIO**  
Wall Tile

---



# GEORGIO

Wall Tile

**327x981 mm**

Color: Light & Dark Gray

**Punch: Flowers Rustic**

White Body

**Matt Glaze**

Effect: Sugar

**Different Face: 8**

Rectified



Georgio / Rustic / Light Gray



Georgio / Flat / Light Gray



Georgio / Rustic / Dark Gray



Georgio / Flat / Dark Gray





**Mosaic  
Tile**



**Mosaic Decoration**  
300x315 mm

**GEORGIO**  
Color: Light & Dark Gray





**SCALA**  
Collection



## **SCALA** Wall Tile

---



A generous range of tiles for walls. A timeless, elegant and contemporary colour. It is perfect for houses with both a classic style or a minimalist design. The extraordinarily realistic appearance of the materials, the variety of shades of grey and the richness of the decorations.



# SCALA

Wall Tile

**327x981 mm**

Color: Light & Dark Gray

**Punch: Rustic**

White Body

**Matt Glaze**

Effect: Silver

**Different Face: 8**

Rectified



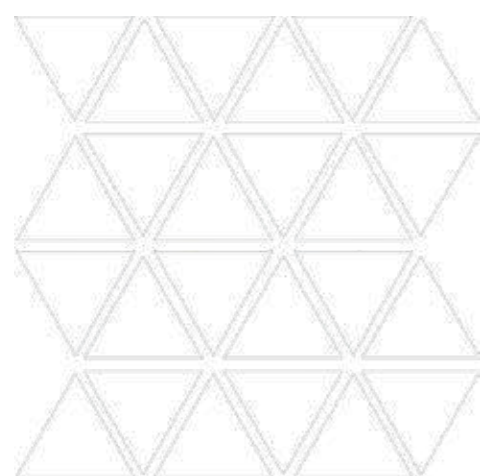
Scala / Flat / Light Gray



Scala / Flat / Dark Gray



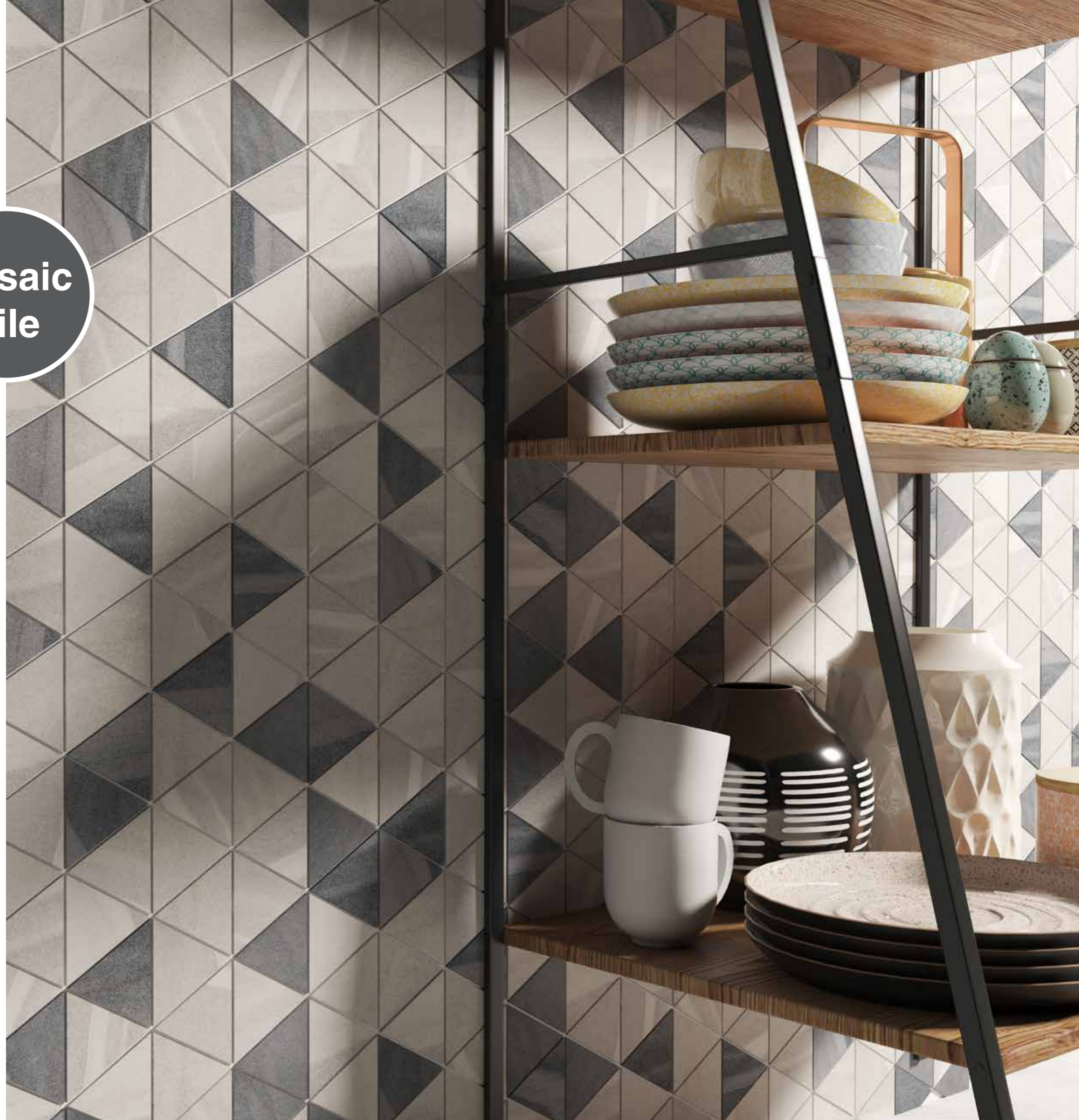




**Mosaic  
Tile**

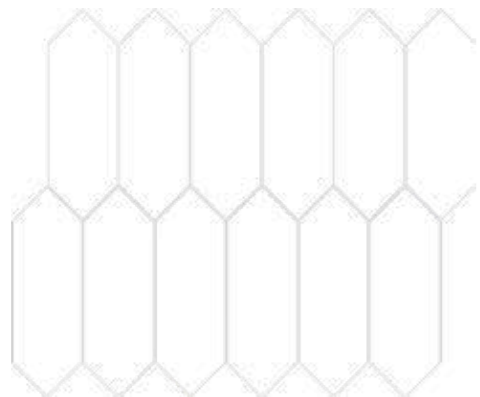
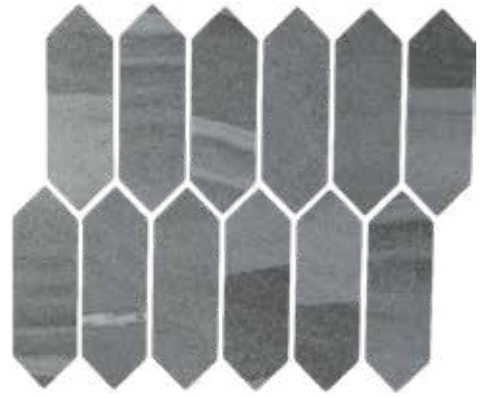
**Mosaic Decoration**  
266x263 mm

**MIX SCALA**  
Color: Light & Dark Gray



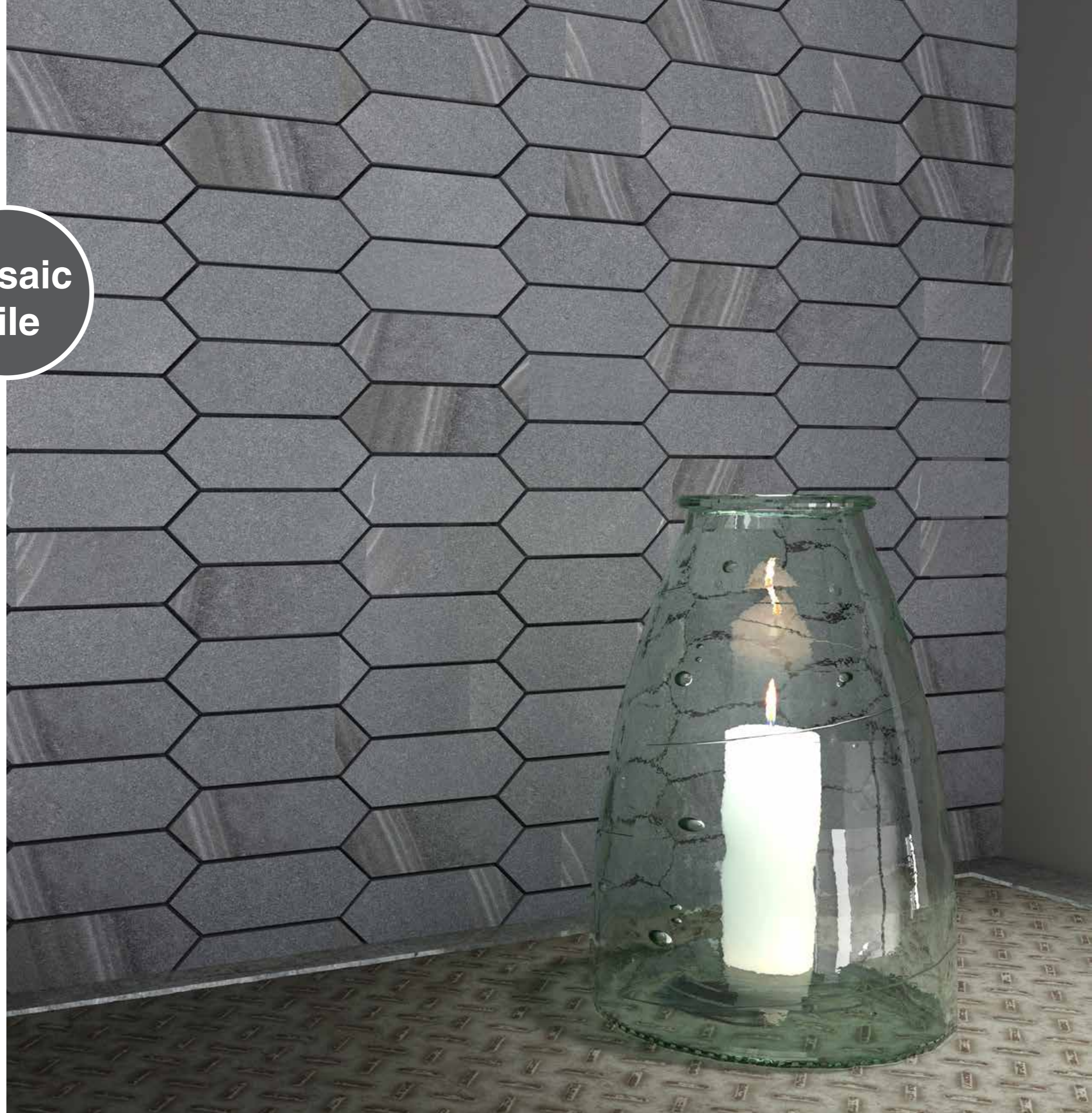


**Mosaic  
Tile**



**Mosaic Decoration**  
340x280 mm

**URUS SCALA**  
Color: Dark Gray





**VITRO**  
Wall Tile







# VITRO

## Wall Tile

**327x981 mm**

Color: White & Gray

**Punch: Rustic**

White Body

**Matt Glaze**

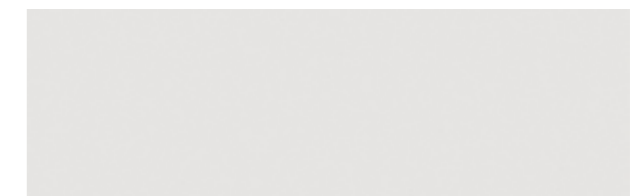
Effect: Luster

**Different Face: 2**

Rectified



Vitro / Rustic / White



Vitro / Flat / White



Vitro / Rustic / Dark Gray



Vitro / Flat / Dark Gray







**327×981 mm**

Color: Light & Dark Gray

**Punch: Rustic**

White Body

**Matt Glaze**

Effect: Silver

**Different Face: 9**

Rectified



**LIMBA**

Wall Tile



Limba / Rustic / Light Gray



Limba / Flat / Light Gray



Limba / Rustic / Dark Gray





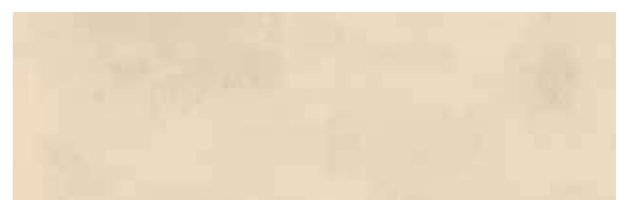


**Island**  
**327x981 mm**

**MATT SERIES**  
Color: Light & Dark Cream  
Effect: Matt Glaze  
Face: 4



Island / Rustic / Light Cream



Island / Flat / Light Cream



Island / Rustic / Dark Cream



Island / Flat / Dark Cream

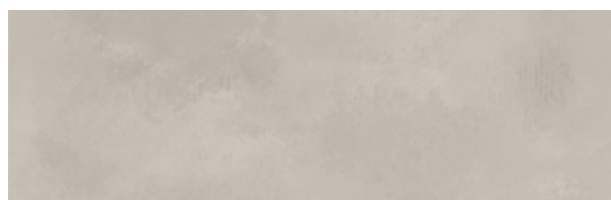


**Island**  
**327x981 mm**

MATT SERIES  
Color: Light & Dark Gray  
Effect: Matt Glaze  
Face: 4



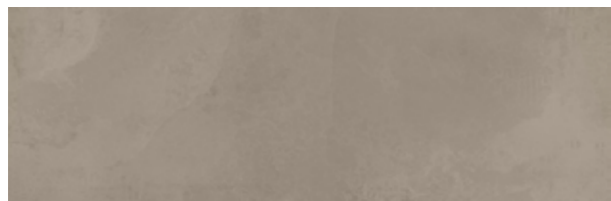
Island / Rustic / Light Gray



Island / Flat / Light Gray



Island / Rustic / Dark Gray



Island / Flat / Dark Gray



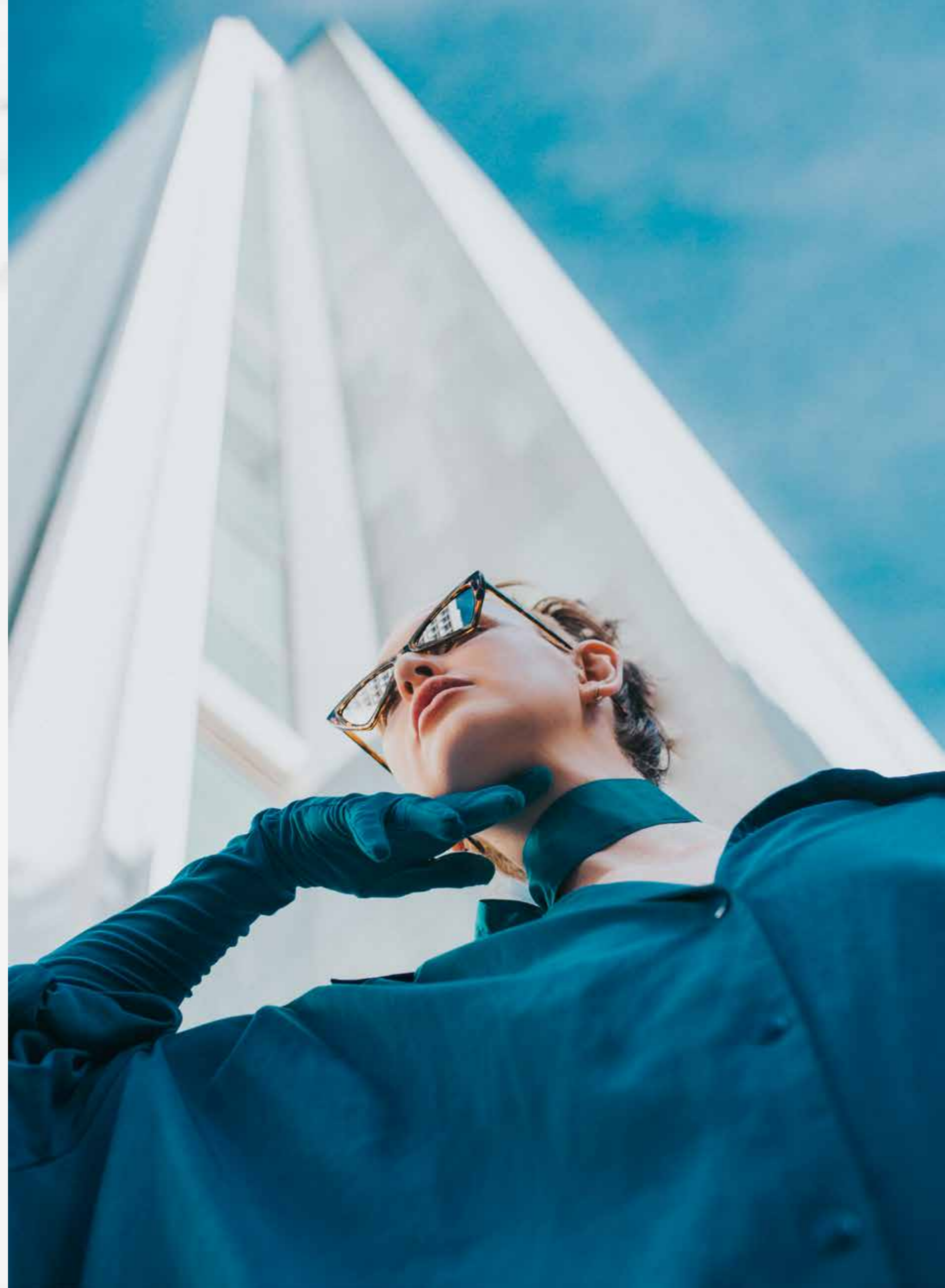






**DALIA**  
COLLECTION

---



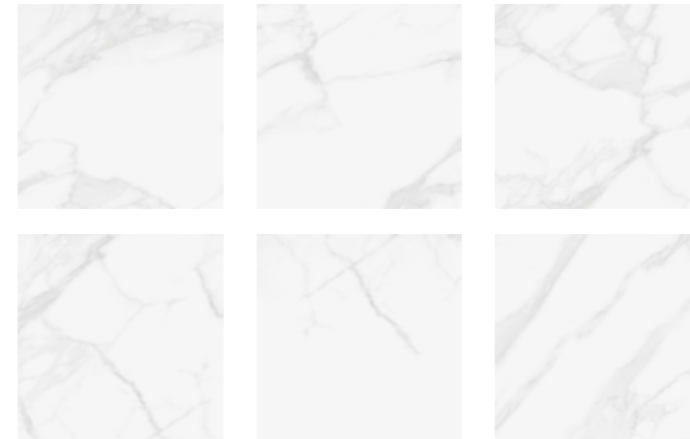




DALIA \ white

# DALIA

90×90 cm



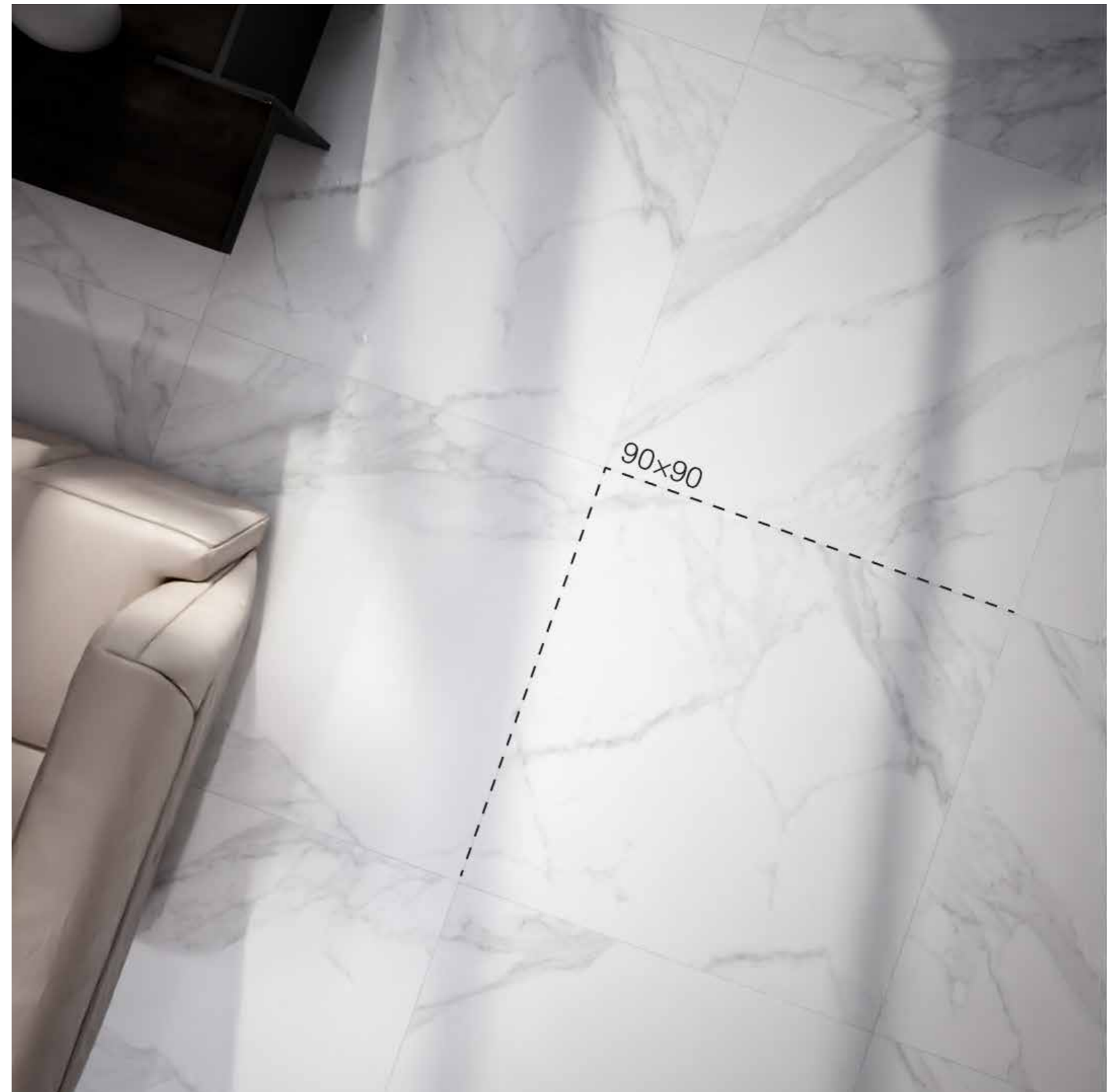
Porcelain  
**Floor Tile**  
White Body  
**Matt Glaze**  
Different Face: 6  
**Rectified**  
Color: White





DALIA \ white

**D**alia celebrates one of Europe's finest stone materials, calacatta. avex has reinterpreted its inspiring material while retaining its geological history with harmonious colour variations and a bright micro-grain. The magnificent 90x90 cm sizes form an integral part of a research path that relates form with content. The large modules support the textured movements, the soft colour variations contributing to the continuity and harmony of the entire space.





**HABLUT**  
COLLECTION

---







HABLUT \ light gray

# HABLUT

90×90 cm



Porcelain  
**Floor Tile**  
White Body  
**Matt Glaze**  
Different Face: 3  
**Rectified**  
Color: Light Gray





Essential Hablut styling meets with the complementary matt finish. avex porcelain stoneware brings to mind age-worn surfaces; the regular edges and balanced reflectance highlight the meticulous attention to design, catering to the needs of a space where brightness and naturalness play a starring role.

The large 90x90 cm modules cover walls and floors for a complete camouflage effect between material and space.

Delicately faded tones and seemingly random decorative patchwork designs adorn the Hablut bases to form poetic ceramic carpets.

The Hablut graphic signs evoke the traditional paste tiles of late 21th century concrete, an aesthetic that has created a real trend of interior decoration. The tone on tone graphic markings recall traditional 21th century stone paste tiles, an aesthetic that has given way to a real interior decoration trend.

HABLUT \ light gray






SCALA  
COLLECTION

---







Dark Beige



Dark Gray



Light Gray

Porcelain stoneware has become a favorite material for housing projects and the contract sector. Due to its solid composition and appearance, this material can be incorporated into spaces with high levels of traffic or exposure (ventilated and glued facades).

Due to its ability to withstand high temperatures, impacts, and blows, as well as its anti-slip properties, Avex Group has continued to develop research into new formulas and formats for porcelain stoneware. The collections of this product are inspired by fine materials such as wood, marble, and granite.

Group porcelain stoneware is adaptable to the needs of each project. Durable, restrained, bright, and balanced, this material is the perfect solution for large areas or projects such as shopping centers, work centers, or public buildings. The elegance, brilliance, consistency, and low maintenance of this material make it increasingly used for terraces and facades. This is also the case with non-slip tiles that withstand regular use and remain intact over time.

The resistance and warmth of ceramic hydraulic-inspired tiles or floor tiles that reproduce the aesthetics of cement recover the handcrafted value of the polished product. Collections that are combined with relief coverings and vinyl finishes. Rustic, industrial and minimalist environments for interiors that seek greater meaning. Designed to suit all different types of projects, the Living range of sofas, auxiliary furnishings and lighting ushers in a new way of looking at the office space. Multi-functionality with meticulous attention to detail.





SCALA \ dark beige

# SCALA

90×90 cm



Porcelain  
**Floor Tile**  
White Body  
**Matt Glaze**  
Different Face: 4  
**Rectified**  
Color: Dark Beige





SCALA \ dark beige

Within the range of products, we have porcelain that can solve outdoor spaces, stairs, façades or area.

Our objective is not only to provide aesthetically well resolved pieces, but also to provide the professional with a work tool that adapts to the needs of each space.

We have a wide range of large-format porcelain that reproduces wood, marble, natural stone, cement, metallic... This range of designs is a tool for projecting spaces: facades, wall and floor coverings, interior and exterior furniture, kitchen and bathroom countertop, decoration...

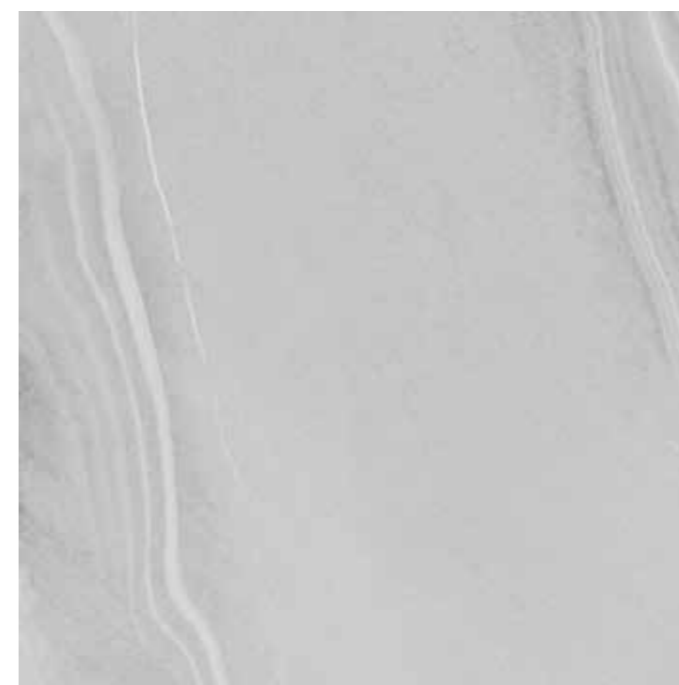






# SCALA

90×90 cm



Porcelain  
**Floor Tile**  
White Body  
**Matt Glaze**  
Different Face: 4  
**Rectified**  
Color: Dark Gray

SCALA \ dark gray





# SCALA

90x90 cm



Porcelain  
**Floor Tile**  
White Body  
**Matt Glaze**  
Different Face: 4  
**Rectified**  
Color: Light Gray

SCALA \ light gray



STRIP  
COLLECTION

AVEX  
CERAMICS



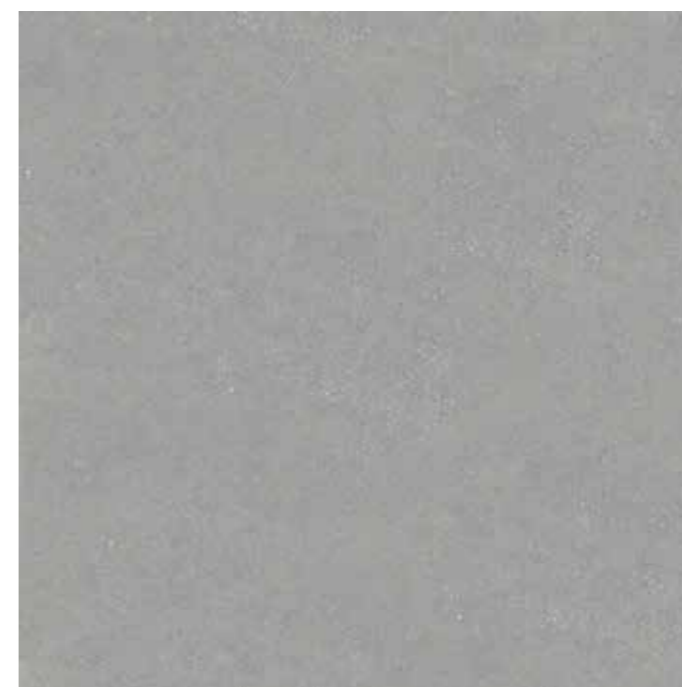
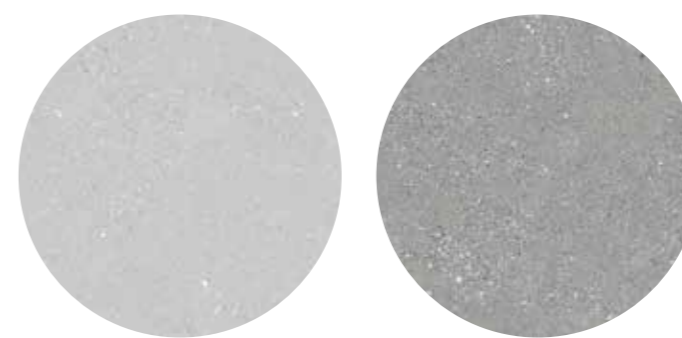




STRIP \ dark gray

# STRIP

90x90 cm



Porcelain  
**Floor Tile**  
White Body  
**Matt Glaze**  
Different Face: 3  
**Rectified**  
Color: Dark Gray





STRIP \ dark gray

Some might say that function comes first but naturally, we think good looks matter most. So why not give your floor a chic update with our collection of lovely stone tiles? From classic stone tiles to trend-setting teal, choose from a range of modern design in gorgeous colours and tones.

We use sophisticated sintering processes to transform select raw material from all over the world to obtain an ultra-high-performance material. Clays, feldspars, kaolin and sand: Italstone porcelain stoneware recreates natural stone to offer a state-of-the-art product that's easy to furnish, live with and love.

A pure, perfect and unalterable material, porcelain stoneware is the advanced synthesis of ceramic technology and culture. It ensures the best technical performance and provides the advantage of extremely high-resolution graphics for an endless range of solutions.

It has always been committed to safeguarding environmental resources, protecting workers in terms of health, safety and environment. Avex Group is committed to doing its part to protect our environmental resources: all production and industrial decisions are made in full compliance with the criteria for an ecologically sustainable system.



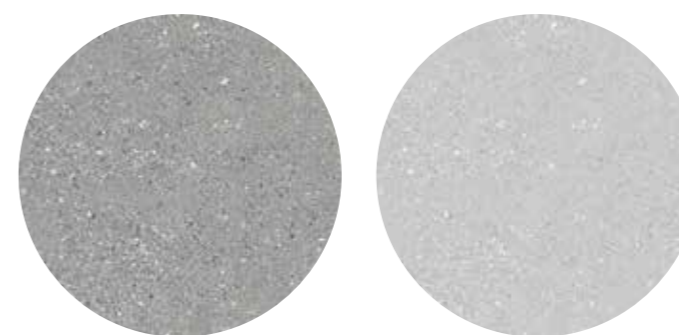




STRIP \ light gray

# STRIP

90×90 cm



Strip

90×90 cm

Porcelain  
**Floor Tile**  
White Body  
**Matt Glaze**  
Different Face: 3  
**Rectified**  
Color: Light Gray





STRIP \ light gray

Our company, in particular, has taken care of the consumption of energy and natural resources, the production of atmospheric emissions, of noise pollution and industrial water discharges.

works in compliance with the environmental requirements for EMAS-ISO 14001 certification, which it has had for over 10 years. European EMAS certification involves evaluating the impact that production sites have on the environment and ensuring that it is limited. It features an environmental management system based on strict parameters.

The decision to certify its Quality Management System in accordance with the UNI ISO 9001:2015 "Quality Management Systems" standard was inspired by the need to demonstrate its ability to regularly supply products or services that meet and ensure the compliance with customer requests and applicable mandatory requirements and the desire to increase customer and stakeholder satisfaction through the effective application of the system, including the processes for improving the system itself.





**VERSO**  
COLLECTION

---

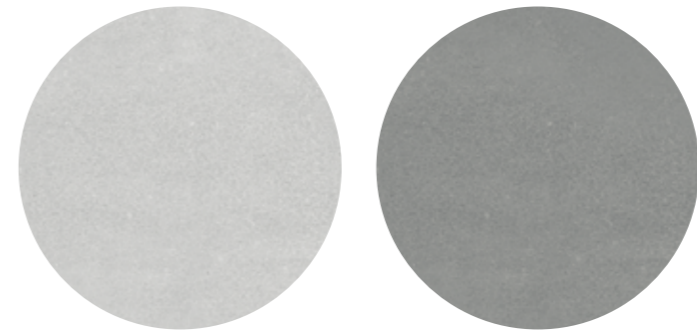






# VERSO

90x90 cm



Porcelain  
**Floor Tile**  
White Body  
**Matt Glaze**  
Different Face: 3  
**Rectified**  
Color: Dark Gray

VERSO \ dark gray





VERSO \ dark gray

Avex Group is proud to offer the world's markets materials that fully express the aesthetic culture and stylistic and technical excellence of Italian-made products, in their fine design, their assortment of colours and decorations, and the use of state-of-the-art technologies and raw materials.

Avex Group supports all the values promoted Ceramica industry association code of ethics, from 100% world production to social and environmental responsibility.

It is constantly committed to maintain quality: starting from the company team up to the Italian and international partners, the group is constantly enriched by highly specialised staff who, through research and training, enhance their value.

The safety of its employees is a crucial priority for Avex Group: evidenced by the continuous commitment aimed at improving and updating in matters of health and protection.

Improving behavior and enhancing company culture in the areas of health and safety is a constant goal of the company.

The attainment of UNI ISO 45001 certification strengthens a business culture that sees safety not simply as a question of regulatory compliance, but as an essential part of working processes.

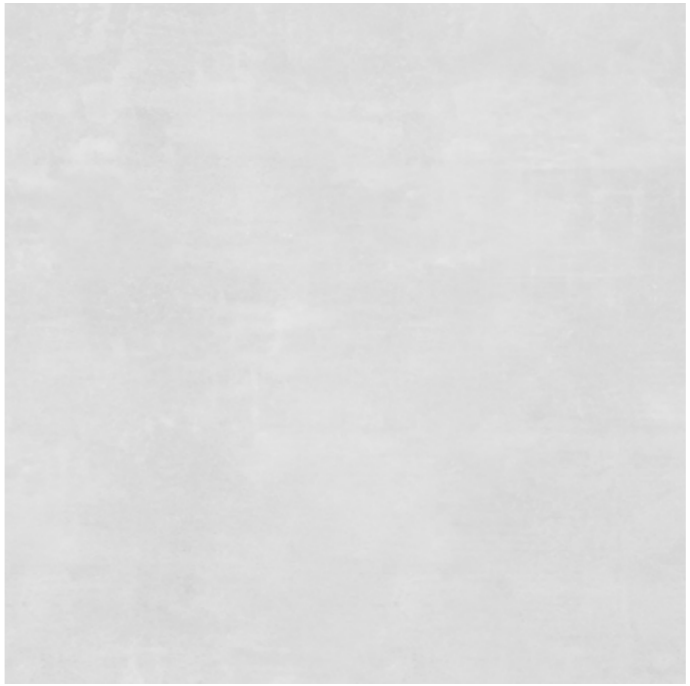
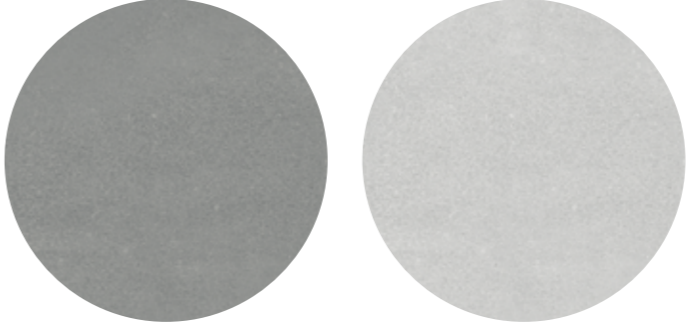






# VERSO

90x90 cm



Porcelain  
**Floor Tile**  
White Body  
**Matt Glaze**  
Different Face: 3  
**Rectified**  
Color: Light Gray

VERSO \ light gray

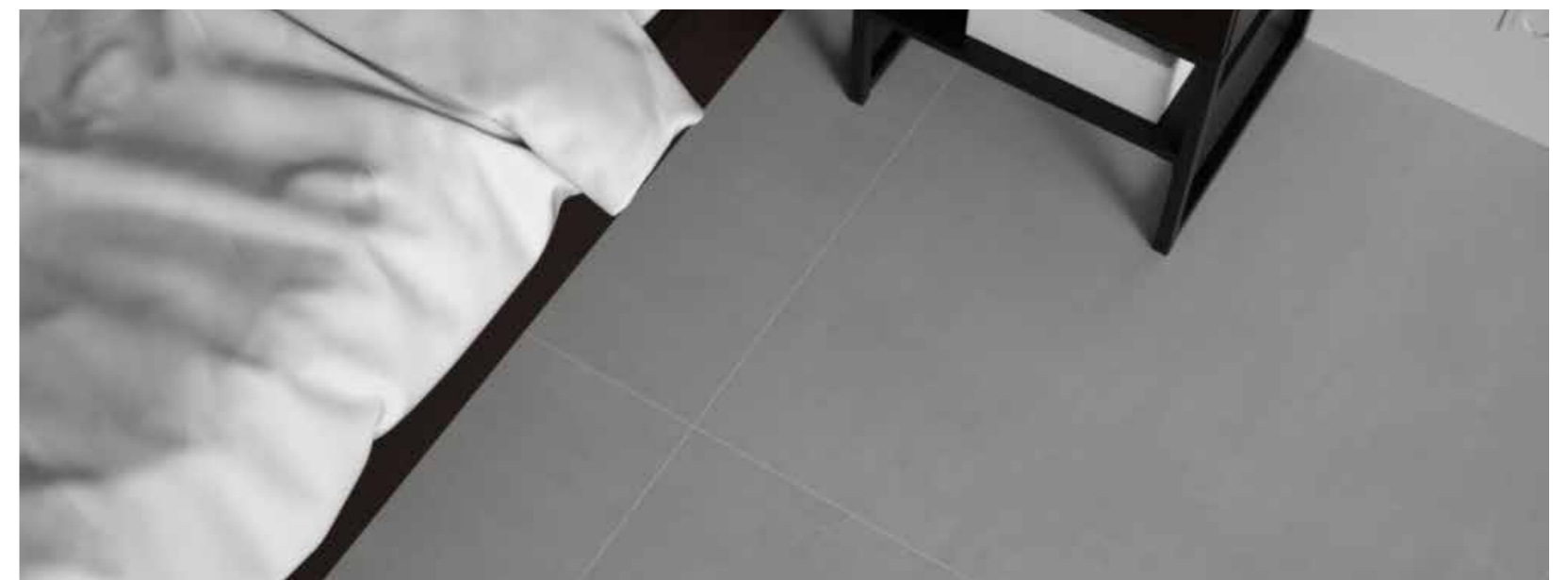




VERSO \ light gray

A decidedly modern interpretation of the warm surfaces created by the skilled hands of expert craftsmen, enhanced by the large size and a carefully chosen colour assortment. The most exquisite craftsmanship tradition updated by ground-breaking technology.

A sophisticated range of colours combined with a rich assortment of sizes. The result is Square, the collection that can inspire a wide variety of home design ideas and provide unique, welcoming visual impact. Antique and modern, natural and honed. The tactile surface, with its many subtle variations, offers the pleasure of choosing from two expressions. One natural as if freshly carved, the other with a magnificent time-worn effect. The wide assortment of surfaces, mosaics, modules and sizes guarantees just the right solution with high technical and stylistic values for public locations with a strong personality.





A photograph showing a red leather bag with a textured surface and a dark strap lying on a grey sidewalk. To the right, a person's leg in a grey skirt and a white perforated sneaker is visible. The background is dark and out of focus.

AVEX  
CERAMICS





RACHINA \ Light





**Porcelain**  
White Body  
**Polished**  
Different Face: 3  
**Flat**  
Rectified  
**Color: Light**

# RACHINA

100×100 cm



RACHINA \ Light





LIMBA \ Light





LIMBA \ Light

**Porcelain**  
White Body  
**Polished**  
Different Face: 4  
**Flat**  
Rectified  
**Color: Light**

# LIMBA

100x100 cm







ORCHARD \ Light





**Porcelain**  
White Body  
**Polished**  
Different Face: 4  
**Flat**  
Rectified  
**Color: Light**

# ORCHARD

100x100 cm



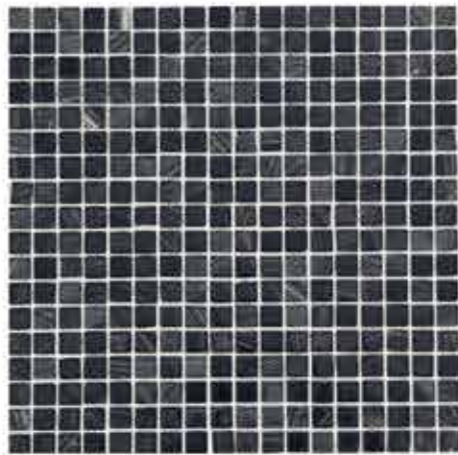
ORCHARD \ Light



# MOSAIC GLASS



# Mosaic GLASS



## Mosaic Glass

ST30

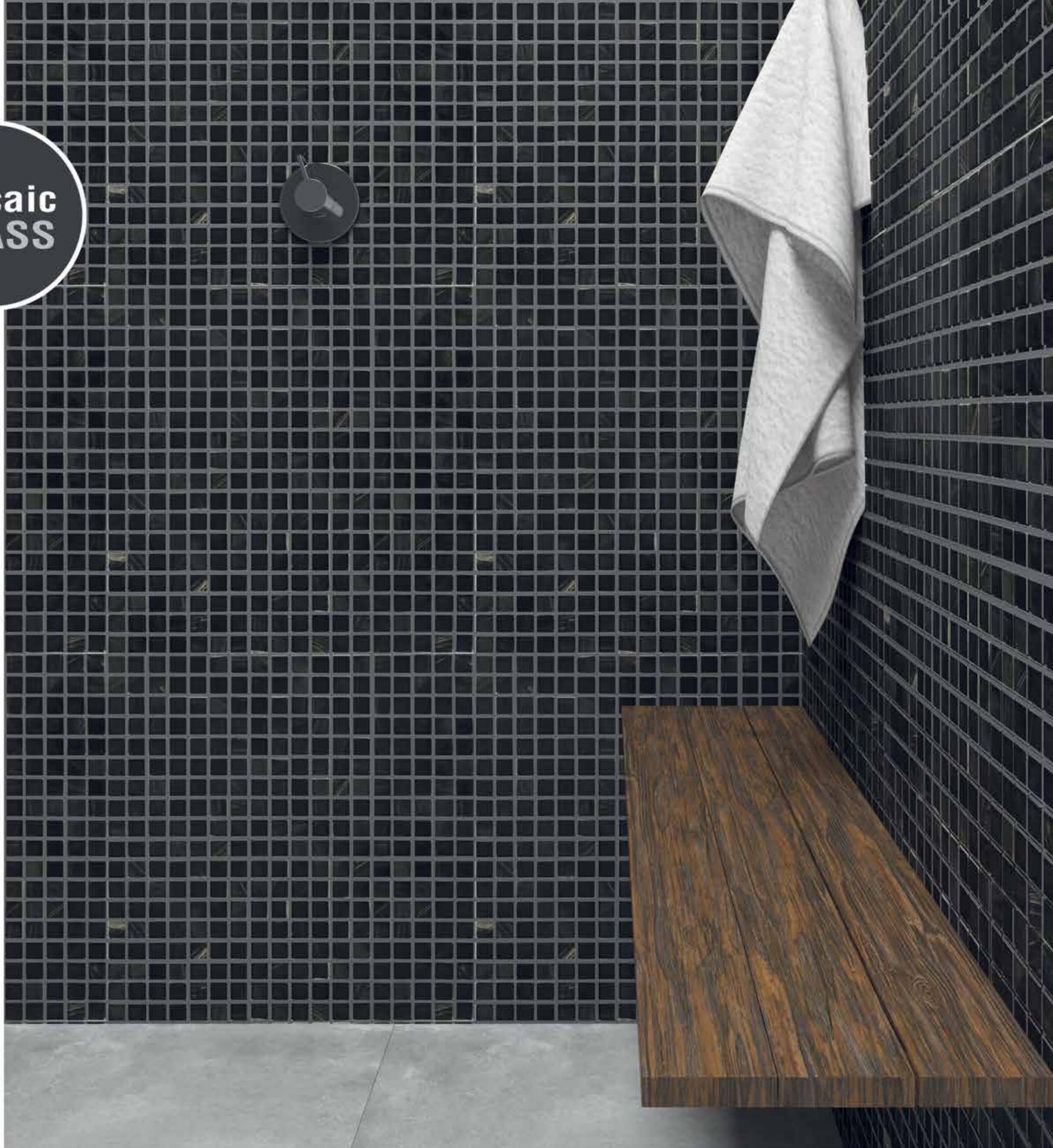
Size: 15x15MM  
Sheet: 300x300MM  
Color: Black



## Mosaic Glass

ST31

Size: 25x25MM  
Sheet: 300x300MM  
Color: Black





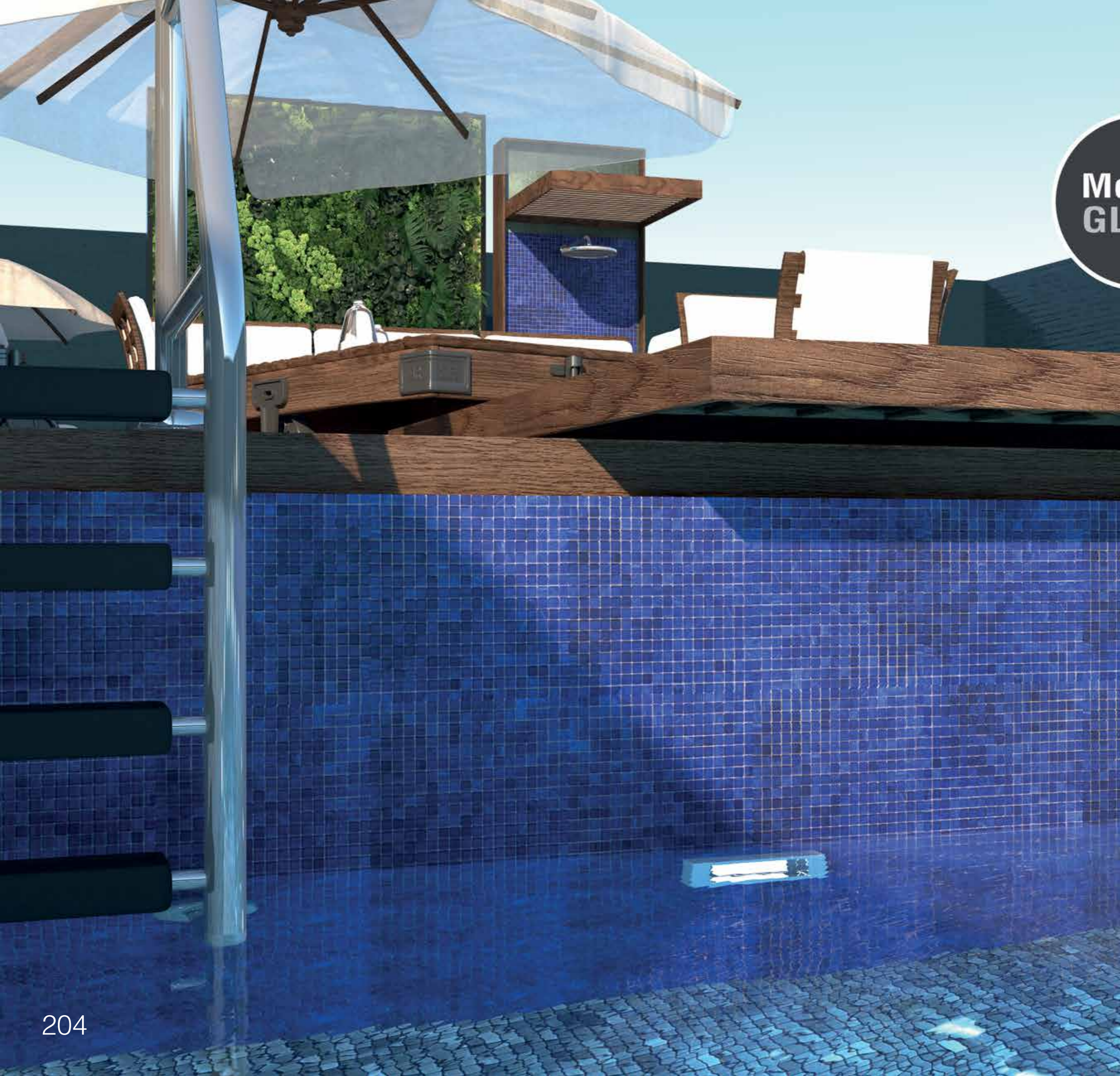
## 25x25 MM

Code: ST31

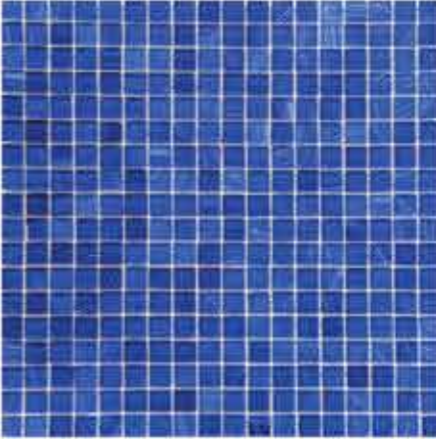
Vibrant colors, multiple finishes, provocative shapes and a wide variety of applications make our glass mosaic tiles an excellent choice. Non-porous and frost-proof, they are the perfect glass tiles for swimming pools, kitchens, baths, spas, lobbies, fountains, and more

**Mosaic  
GLASS**



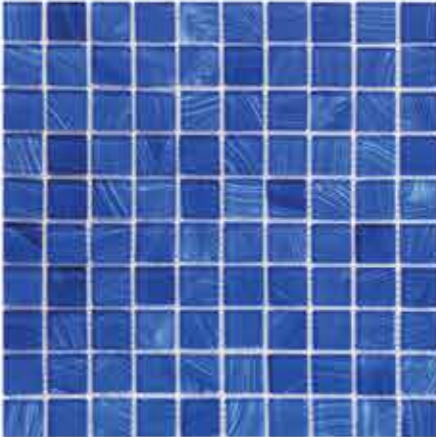


**Mosaic  
GLASS**



**Mosaic Glass**  
ST35

Size: 15x15MM  
Sheet: 300x300MM  
Color: Blue



**Mosaic Glass**  
ST36

Size: 25x25MM  
Sheet: 300x300MM  
Color: Blue

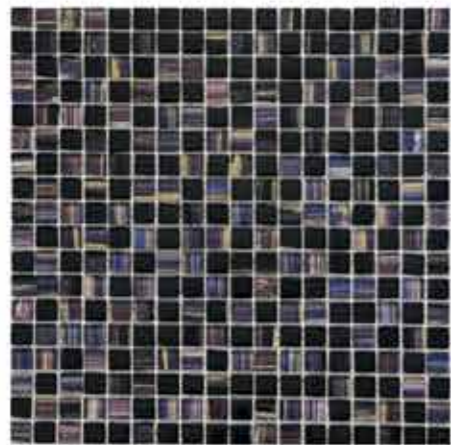
-  Indoor
-  Outdoor
-  Floor Tile
-  Wall Tile
-  Swimming Pools
-  Patio
-  Reception
-  Kitchen
-  Bathroom



**Mosaic  
GLASS**



# Mosaic GLASS



## Mosaic Glass

ST21

Size: 15x15MM  
Sheet: 300x300MM  
Color: Black







**Mosaic  
GLASS**



**Mosaic Glass**  
ST26

Size: 15x15MM  
Sheet: 300x300MM  
Color: White





# Mosaic GLASS



## Mosaic Glass

ST24

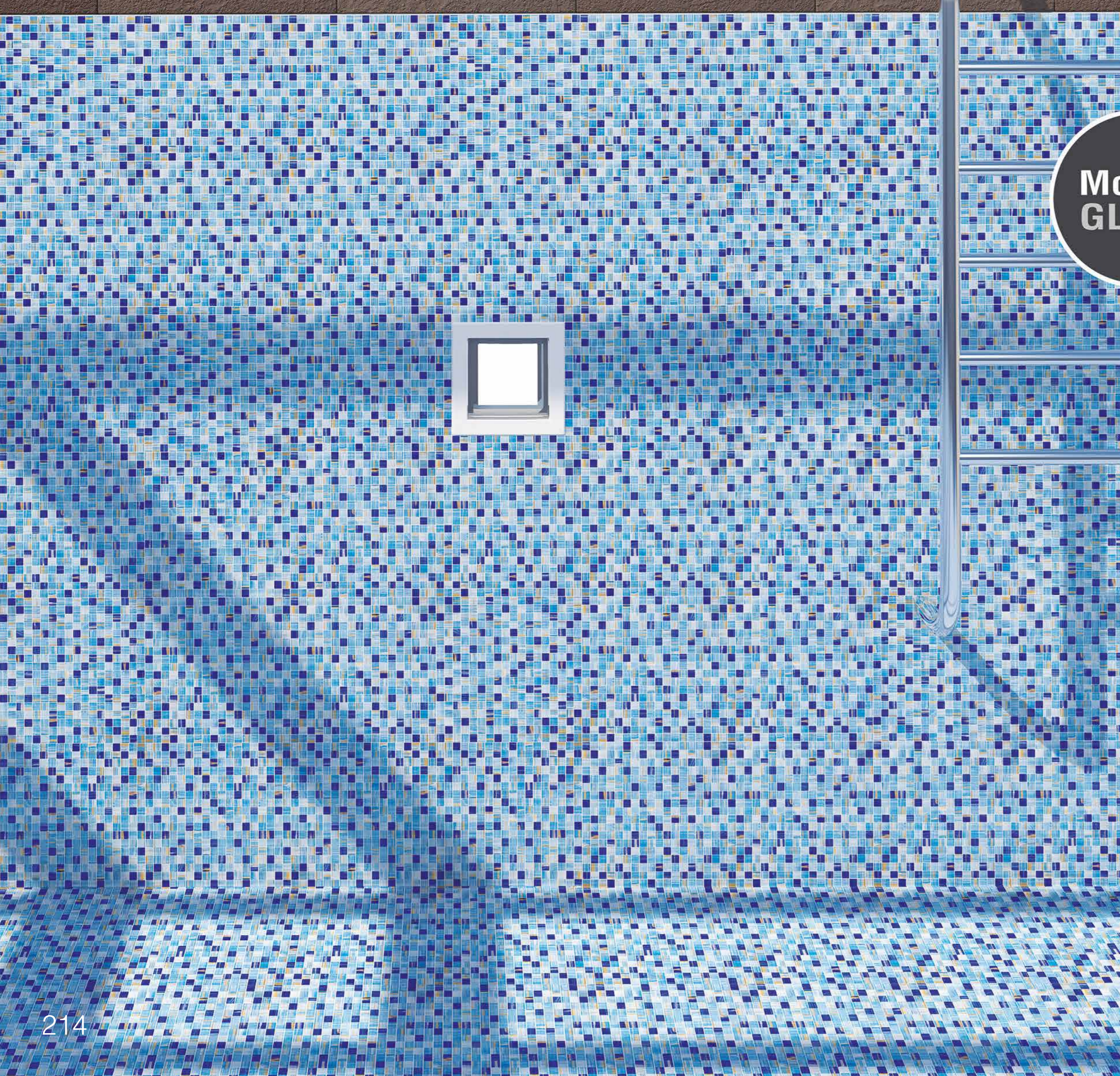
Size: 15x15MM

Sheet: 300x300MM

Color: Green







**Mosaic  
GLASS**



**Mosaic Glass**  
ST22

Size: 15x15MM  
Sheet: 300x300MM  
Color: Blue

- Indoor
- Outdoor
- Floor Tile
- Wall Tile
- Swimming Pools
- Patio
- Reception
- Kitchen
- Bathroom



## 2021 Collection

The matte glaze is more slip-resistant whereas shiny, high-gloss ceramic floor tiles could be dangerous. An additional point is that the shinier the tile, the more easily it shows up dirt... Using ceramic tiles with a matte finish also has advantages on kitchen countertops.

Although glazed ceramic and porcelain tile are a little less robust in terms of density and thickness than their unglazed counterpart, they allow for a wider range of styles and colors. Glazed tiles

also tend to be more resistant to staining, as they're protected by a non-porous layer of liquid glass.

When it comes to the glaze itself, different options are available and will impact the degree of durability. Some varieties of glazed tile are fired at higher temperatures than others, and therefore are harder as well. This can often be determined by how light or dark the glaze is, with lighter glazes generally being harder than darker glazes.

Then there is the issue of gloss:

matte and satin finishes are generally harder than shiny finishes. As always, it's a good idea to try and strike a balance between practicality and decorative taste when choosing your glazed ceramic and porcelain tile.

Whether you choose glazed or unglazed tile, both types have their own unique qualities. As always, it's best to know the needs of your space and the look you are after. This way, your flooring project will be something you can enjoy for many years in the future.

Through optimised production processes and the most advanced technologies, it is now possible to obtain products with extraordinary aesthetic qualities. As well as products inspired by continuous research into the most recent design and decoration trends, it is now possible to reproduce in an incredibly faithful way every type of material from wood to stone, concrete and resin.

### AVEX CERAMICS

The best thing in life are the people we love the places we've been and the memories we've made.

SIZE	TILE/BOX	SQM	WEIGHT/BOX (kg)	BOXES/PALLET	SQM/PALLET	WEIGHT/PALLET (kg)
600x1200mm	2	1.44	38	60	86.4m <sup>2</sup>	2280

## Porcelain Tile Specifications (First Grade) Size 60x120cm (Rectified) Matt Glaze

Friction	ISO 10545-17
STAINABLE CLASS	3
House Holds & POOL SALTS	GB
Chemical Class	GLB
Resistance of Abrasion	1
water absorption group	B I a
Approx square (m <sup>2</sup> )	1.44
Thickness (mm)	12
QTY	2
Consumption Environment	Indoor & outdoor
Kind of tile prod	GL
Nominal Size	600x1200
S	598x1196
M	599x1198
L	600x1200



Packing Specifications  
Size 60×120 cm (Rectified) Polished

SIZE	TILE/BOX	SQM	WEIGHT/BOX (kg)	BOXES/PALLET	SQM/PALLET	WEIGHT/PALLET (kg)
600×1200mm	2	1.44	39	46	66.24m <sup>2</sup>	1800

Porcelain Tile Specifications (First Grade)  
Size 60×120cm (Rectified) Polished

Classification	Interior & Exterior / Floor GL
QTY	2
Approx square (m <sup>2</sup> )	1.44
Abrasive Class	1
Res.low Acid and Alkalis	GLB
House Hold and Pool Salt	GB
Work Size (mm)	600×1200
Thinkness (mm)	12.5
Nominal Size	600×1200
Staining Class	4

327×981 Collection Packing List

SIZE	TILE/BOX	SQM	WEIGHT/BOX (kg)	BOXES/PALLET	SQM/PALLET	WEIGHT/PALLET (kg)
327×981mm	4	1.28	28.5	80.64	60.606m <sup>2</sup>	1795

Wall Tile Specifications (First Grade)  
Size 327×981 cm (Rectified)

Length & Size	330×1000mm
Working Size	327×981 +/-0.1%mm
Thickness	12.5+/-1%mm
Approximate Area	1.28m <sup>2</sup>
Surface Flatness	0.5+/-0.5% mm
water absorption (Weight Percent)	B III (13-16)
Modulus of Rupture (Nmm <sup>2</sup> ) (bending Streng TH)	min 15
Abrasion Resistance	PEI 1
Thermal Shock Resistance	-
Thermal Expansion Coefficient (+-100.C)	85×10 <sup>-7</sup> /c <sup>0</sup>
Crazing Resistance	-
Frost Resistance	-
Stain Resistance	min 3
Chemical Resistance	Min GB (A)
Friction Coefficient	0.3
Impact Resistance	0.85



**900x900mm Collection Packing List**

SIZE	TILE/BOX	SQM	WEIGHT/BOX (kg)	BOXES/PALLET	SQM/PALLET	WEIGHT/PALLET (kg)
900x900mm	2	1.52	44.6	38	57.76m <sup>2</sup>	1.700

Porcelain Tile Specifications (First Grade)  
Size 900x900mm (Rectified)

Friction	ISO 10545-17
STAINABLE CLASS	3
House Holds & POOL SALTS	GB
Chemical Class	GLB
Resistance of Abrasion	1
water absorption group	B I a
Approx square (m <sup>2</sup> )	1.52
Thickness (mm)	13
QTY	2
Consumption Environment	Indoor & outdoor
Kind of tile prod	GL
Nominal Size	875x875
S	871x871
M	873x873
L	875x875

Packing Specifications  
Size 100x100cm (Rectified) Polished

SIZE	TILE/BOX	SQM	WEIGHT/BOX (kg)	BOXES/PALLET	SQM/PALLET	WEIGHT/PALLET (kg)
1000x1000mm	2	1.96	58	42	82.3284m <sup>2</sup>	2240

Porcelain Tile Specifications (First Grade)  
Size 100x100cm (Rectified) Polished

Classification	Interior & Exterior / Floor GL
QTY	2
Approx square (m <sup>2</sup> )	1.96
Abrasive Class	1
Res.low Acid and Alkalis	GLB
House Hold and Pool Salt	GB
Work Size (mm)	990x990
Thickness (mm)	12.5
Nominal Size	1000x1000
Staining Class	3

**Mosaic Glass Packing List**

SHEET SIZE	SIZE	TILE/BOX	SQM	WEIGHT/BOX	BOXES/PALLET	WEIGHT/PALLET (kg)
300x300mm	15x15mm 25x25mm	11	1m <sup>2</sup>	-	-	-



